

THE XTRA POINT PUBLICATION

Bowl Edition

The best source of football statistical information in the industry

"We do the research so you don't have to!"

Bowl Games At A Glance

Date	Bowl	Site	Matchups	Favorite	Line	Result
Dec. 20	Poinsettia	San Diego	Utah (8-4) vs. Navy (8-4)	Utah	- 7.5	Utah 35-32
Dec. 21	New Orleans	New Orleans	Fla. Atlantic (7-5) vs. Memphis (7-5)	Fla. Atlantic	- 3	Fla. Atlantic 44-27
Dec. 22	Papajohns.com	Birmingham, AL	Cincinnati (9-3) vs. So. Miss. (7-5)	Cincinnati	- 10.5	Cincinnati 31-21
Dec. 22	New Mexico	Albuquerque	New Mexico (8-4) vs. Nevada (6-6)	New Mexico	- 3	New Mexico 23-0
Dec. 22	Las Vegas	Las Vegas	BYU (10-2) vs. UCLA (6-6)	BYU	- 5.5	BYU 17-16
Dec. 23	Hawaii	Honolulu	E. Carolina (7-5) vs. Boise St. (10-2)	Boise St.	- 10.5	E. Carolina 41-38
Dec. 26	Motor City	Detroit	Purdue (7-5) vs. Central Mich. (8-5)	Purdue	- 7.5	Purdue 51-48
Dec. 27	Holiday	San Diego	Texas (9-3) vs. Arizona St. (10-2)	Texas	- 2.5	Texas 52-34
Dec. 28	Champs Sports	Orlando	Mich. St. (7-5) vs. Bost. Coll. (10-3)	Boston Coll.	- 4	Boston Coll. 24-21
Dec. 28	Emerald	San Francisco	Oregon St. (8-4) vs. Maryland (6-6)	Oregon St.	- 5	Oregon St. 21-14
Dec. 28	Texas	Houston	Houston (8-4) vs. TCU (7-5)	TCU	- 4.5	TCU 20-13
Dec. 29	Meineke Car Care	Charlotte	Wake Forest (8-4) vs. Conn. (9-3)	Wake Forest	- 2.5	Wake Forest 24-10
Dec. 29	Liberty	Memphis	Cent. Fla. (10-3) vs. Miss. St. (7-5)	UCF	- 3	Miss. St. 10-3
Dec. 29	Alamo	San Antonio	Texas A&M (7-5) vs. Penn St. (8-4)	Penn St.	- 5.5	Penn St. 24-17
Dec. 30	Independence	Shreveport, La.	Alabama (6-6) vs. Colorado (6-6)	Alabama	- 3.5	Alabama 30-24
Dec. 31	Armed Forces	Ft. Worth	Air Force (9-3) vs. California (6-6)	California	- 4	California 42-36
Dec. 31	Sun	El Paso, Tx.	Oregon (8-4) vs. South Florida (9-3)	S. Florida	- 6	Oregon 56-21
Dec. 31	Humanitarian	Boise	Ga. Tech (7-5) vs. Fresno St. (8-4)	Ga. Tech	- 6	Fresno St. 40-28
Dec. 31	Music City	Nashville	Kentucky (7-5) vs. Florida St. (7-5)	Kentucky	- 9	Kentucky 35-28
Dec. 31	Chick-fil-A Peach	Atlanta	Auburn (8-4) vs. Clemson (9-3)	Clemson	- 2.5	Auburn 23-20
Dec. 31	Insight	Tempe, Ariz.	Indiana (7-5) vs. Oklahoma St. (6-6)	Okla. St.	- 4.5	Okla. St. 49-33
Jan. 1	Outback	Tampa	Wisconsin (9-3) vs. Tennessee (9-4)	Tennessee	- 1.5	Tennessee 21-17
Jan. 1	Cotton	Dallas	Missouri (11-2) vs. Arkansas (8-4)	Missouri	- 3.5	Missouri 38-7
Jan. 1	Capital One	Orlando	Michigan (8-4) vs. Florida (9-3)	Florida	- 10.5	Michigan 41-35
Jan. 1	Gator	Jacksonville	Virginia (9-3) vs. Texas Tech (8-4)	Texas Tech	- 6	Texas Tech 31-28
Jan. 1	Rose	Pasadena, Cal.	Illinois (9-3) vs. Southern Cal (10-2)	USC	- 13.5	USC 49-17
Jan. 1	Sugar	New Orleans	Hawaii (12-0) vs. Georgia (10-2)	Georgia	- 7.5	Georgia 41-10
Jan. 2	Fiesta	Glendale, AZ	Okla. (11-2) vs. West Va. (10-2)	Oklahoma	- 7	West Virginia 48-28
Jan. 3	Orange	Miami	Va. Tech (11-2) vs. Kansas (11-1)	Va. Tech	- 3	Kansas 24-21
Jan. 5	International	Toronto	Rutgers (7-5) vs. Ball St. (7-5)	Rutgers	- 10	Rutgers 52-30
Jan. 6	GMAC	Mobile, Ala.	Tulsa (9-4) vs. Bowling Green (8-4)	Tulsa	- 5	Tulsa 63-7
Jan. 8	BCS Championship	New Orleans	Ohio St. (11-1) vs. LSU (11-2)	LSU	- 4	LSU 38-24

The Xtra Point

Football Publication

The Best Source in the Industry for College and Pro Football Information

Subscribe NOW.....You Get:

- √ Weekly Matchups, with historical information Straight Up (SU) and Against The Spread (ATS)
- √ Available on The Xtra Point website - complete access anytime day or night
- √ 18 Weeks of College and Pro regular seasons
- √ The College Bowl Edition (worth the price of subscription by itself!)
- √ All Pro Playoff Editions
- √ Team Power Rantings, Opening Lines, and Experts' Best Bets of the Week
- √ The Top 25 Rankings each week, and their results
- √ And, Much, Much More

Don't Delay - Get the best football handicapping information available anywhere.....at the best price

Subscribe Now ----- Cost for the entire season is only \$40

Check out our Sample Editions on the Internet at www.theXtrapoint.com

Easy online sign up or complete the form below and send....Act Now.....be sure you have access from Week 1!!

Subscription Form

Name: _____ Address: _____

City: _____ State: _____ Zip Code: _____ Phone # _____

Email Address: _____

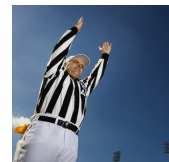
Send this form with your check for \$40 to:

The Xtra Point Publication

P.O. Box 2864

Salina, KS 67402-2864

www.theXtrapoint.com



The Xtra Point

Bowl Edition

2008-2009 Bowl Games

TEAM POWER RANKINGS											
1	LSU	94.31	31	VIRGINIA	74.49	61	NAVY	65.94	91	EASTERN MICHIGAN	53.38
2	SOUTHERN CALIFORNIA	94.03	32	KENTUCKY	74.46	62	TROY ST.	65.13	92	WYOMING	53.27
3	WEST VIRGINIA	90.42	33	UTAH	74.41	63	INDIANA	65.12	93	DUKE	53.02
4	MISSOURI	89.15	34	ARKANSAS	74.35	64	EAST CAROLINA	64.78	94	OHIO UNIVERSITY	53.01
5	GEORGIA	88.07	35	MARYLAND	73.87	65	NOTRE DAME	64.32	95	BAYLOR	52.45
6	VIRGINIA TECH	85.90	36	OKLAHOMA ST.	73.74	66	KANSAS ST.	64.29	96	BUFFALO	52.39
7	OKLAHOMA	85.87	37	RUTGERS	72.88	67	STANFORD	63.96	97	MEMPHIS	52.18
8	KANSAS	85.68	38	TEXAS A&M	72.57	68	NEBRASKA	63.48	98	MIDDLE TENNESSEE ST.	52.14
9	FLORIDA	85.18	39	SOUTH CAROLINA	72.40	69	NORTH CAROLINA	63.33	99	TOLEDO	51.56
10	OHIO ST.	83.58	40	TCU	72.25	70	NORTHWESTERN	63.23	100	RICE	51.05
11	OREGON	83.04	41	BOISE STATE	71.28	71	IOWA ST.	63.21	101	TULANE	50.10
12	OREGON ST.	80.91	42	MISSISSIPPI ST.	71.07	72	CENTRAL MICHIGAN	63.20	102	ARKANSAS ST.	49.84
13	MICHIGAN	80.05	43	CALIFORNIA	71.07	73	IOWA	63.18	103	NEVADA LAS VEGAS	49.63
14	TEXAS	80.04	44	WASHINGTON	71.07	74	MIAMI FL.	62.77	104	MIAMI OHIO	49.61
15	CLEMSON	78.92	45	AIR FORCE	71.05	75	MISSISSIPPI	62.72	105	UTAH ST.	49.55
16	BYU	78.44	46	HAWAII	70.82	76	SOUTHERN MISSISSIPPI	62.28	106	AKRON	49.15
17	TENNESSEE	78.31	47	FLORIDA ST.	69.88	77	HOUSTON	61.51	107	WESTERN KENTUCKY	48.93
18	PENN ST.	78.25	48	ALABAMA	69.85	78	FLORIDA ATLANTIC	61.49	108	TEMPLE	48.62
19	ARIZONA	78.08	49	CENTRAL FLORIDA	69.47	79	MINNESOTA	61.36	109	SMU	48.62
20	CINCINNATI	77.92	50	PURDUE	69.39	80	BALL ST.	60.07	110	NORTHERN ILLINOIS	48.33
21	UCLA	77.80	51	LOUISVILLE	69.37	81	NORTH CAROLINA ST.	59.27	111	LOUISIANA-LAFAYETTE	47.85
22	WISCONSIN	77.41	52	PITTSBURGH	69.30	82	WESTERN MICHIGAN	59.19	112	TEXAS EL PASO	47.56
23	BOSTON COLLEGE	76.61	53	WASHINGTON ST.	68.90	83	NEVADA	59.11	113	LOUISIANA TECH	47.48
24	TEXAS TECH	76.60	54	FRESNO ST.	67.65	84	COLORADO ST.	57.56	114	ARMY	46.32
25	WAKE FOREST	76.31	55	COLORADO	67.45	85	BOWLING GREEN	57.54	115	NEW MEXICO ST.	45.69
26	ILLINOIS	76.03	56	NEW MEXICO	67.39	86	LOUISIANA-MONROE	57.49	116	KENT ST.	45.47
27	MICHIGAN ST.	75.97	57	CONNECTICUT	67.31	87	MARSHALL	55.88	117	ALABAMA BIRMINGHAM	43.61
28	AUBURN	75.90	58	VANDERBLT	66.99	88	SAN DIEGO ST.	55.15	118	IDAHO	42.20
29	ARIZONA ST.	75.60	59	GEORGIA TECH	66.88	89	SAN JOSE ST.	54.37	119	FLORIDA INTERNATIONAL	40.67
30	SOUTH FLORIDA	75.25	60	TULSA	65.94	90	SYRACUSE	53.78	120	NORTH TEXAS	39.25

The Red Zone - - - - Experts Best Bets of the Week				
Expert:	<u>The Black Widow</u>	<u>Vinny K.</u>	<u>Jimmy the Boss</u>	<u>Chalkman</u>
Best Bet:	Kansas St. -15	Florida -2.5	Kansas St. -3	UCLA +7
Next Best:	Ohio St. -25	Kansas -12	Alabama +4.5	Boston Coll. -4
Season Record:	5 - 9	5 - 9	5 - 9	5 - 9
Season %:	66.9%	66.9%	66.9%	66.9%

THE XTRA POINT
2007-2008 BOWL EDITION

POINSETTA (SAN DIEGO)
December 20, 2007

UTAH							NAVY						
2006 Record 8 - 5 (6 - 4 ATS)							2006 Record 9 - 4 (6 - 5 ATS)						
Date	Opponent	Record	SU	Score	Line	Vs. Spread	Date	Opponent	Record	SU	Score	Line	Vs. Spread
A-30	at Oregon St	0 - 1	L	7 - 24	6.5	L 0 - 1	A-31	at Temple	1 - 0	W	30 - 19	-20.5	L 0 - 1
S-8	AIR FORCE	0 - 2	L	12 - 20	-7.5	L 0 - 2	S-7	at Rutgers	1 - 1	L	24 - 41	15.5	L 0 - 2
S-15	UCLA	1 - 2	W	44 - 6	13.5	W 1 - 2	S-15	BALL ST	1 - 2	L	31 - 34	-7.0	L 0 - 3
S-22	at UNLV	1 - 3	L	0 - 27	-8.0	L 1 - 3	S-22	DUKE	2 - 2	W	46 - 43	-13.5	L 0 - 4
S-29	UTAH ST	2 - 3	W	34 - 18	-20.5	L 1 - 4	S-29	AIR FORCE	3 - 2	W	31 - 20	-3.0	W 1 - 4
O-5	at Louisville	3 - 3	W	44 - 35	14.5	W 2 - 4	O-10	at Pittsburgh	4 - 2	W	48 - 45	4.5	W 2 - 4
O-13	SAN DIEGO ST	4 - 3	W	23 - 7	-13.5	W 3 - 4	O-20	WAKE FOREST	4 - 3	L	24 - 44	3.0	L 2 - 5
O-18	at TCU	5 - 3	W	27 - 20	3.5	W 4 - 4	O-27	DELAWARE	4 - 4	L	52 - 59	NL	#### 2 - 5
O-27	at Colo St	6 - 3	W	27 - 3	-5.5	W 4 - 4	N-3	at Notre Dame	5 - 4	W	46 - 44	3.0	W 3 - 5
N-10	WYOMING	7 - 3	W	50 - 0	-13.0	W 6 - 4	N-10	at North Texas	6 - 4	W	74 - 62	-15.0	L 3 - 6
N-17	NEW MEXICO	8 - 3	W	28 - 10	-14.5	W 7 - 4	N-17	NO ILLINOIS	7 - 4	W	35 - 24	-15.5	L 3 - 7
N-24	at BYU	8 - 4	L	10 - 17	4.5	L 7 - 5	D-1	ARMY	8 - 4	W	38 - 3	-14.0	W 4 - 7
Total Points 306 187							Total Points 479 438						
Avg Pts Per Game 26 16							Avg Pts Per Game 40 37						
Record SU 8 - 4							Record SU 8 - 4						
Record ATS 7 - 5							Record ATS 4 - 7						
Streaks Lost 1 in a row - 7.5							Streaks Won 4 in a row + 7.5						
Spread: as of: 1/4							Spread: as of: 1/4						

NEW ORLEANS
December 21, 2007

FLORIDA ATLANTIC							MEMPHIS						
2006 Record 5 - 7 (5 - 6 ATS)							2006 Record 2 - 10 (4 - 6 ATS)						
Date	Opponent	Record	SU	Score	Line	Vs. Spread	Date	Opponent	Record	SU	Score	Line	Vs. Spread
S-1	MIDDLE TENN	1 - 0	W	27 - 14	-2.0	W 1 - 0	S-1	MISSISSIPPI	0 - 1	L	21 - 23	2.5	W 1 - 0
S-8	at Okla St	1 - 1	L	6 - 42	23.5	L 1 - 1	S-15	JACKSONVILLE ST	1 - 1	W	35 - 14	NL	#### 1 - 0
S-15	MINNESOTA	2 - 1	W	42 - 39	8.5	W 2 - 1	S-22	at UCF	1 - 2	L	20 - 56	7.0	L 1 - 1
S-22	at North Texas	3 - 1	W	30 - 20	-6.5	W 3 - 1	S-27	at Arkansas St.	1 - 3	L	31 - 35	4.0	P 1 - 1
S-29	at Kentucky	3 - 2	L	17 - 45	22.0	L 3 - 2	O-2	MARSHALL	2 - 3	W	24 - 21	-2.5	W 2 - 1
O-6	S FLORIDA	3 - 3	L	23 - 35	16.0	W 4 - 2	O-13	MIDDLE TENN	2 - 4	L	7 - 21	-4.0	L 2 - 2
O-20	at La-Lafayette	4 - 2	W	39 - 32	-7.0	P 4 - 2	O-20	at Rice	3 - 4	W	38 - 35	2.0	W 3 - 2
O-27	LA-MONROE	4 - 3	L	30 - 33	-6.0	L 4 - 3	O-27	at Tulane	4 - 4	W	28 - 27	1.5	W 4 - 2
N-10	ARKANSAS ST	5 - 3	W	34 - 31	-7.0	L 4 - 4	N-3	E CAROLINA	4 - 5	L	40 - 56	6.0	L 4 - 3
N-17	at Florida	5 - 4	L	20 - 59	34.5	L 4 - 5	N-10	at So Miss	5 - 5	W	29 - 26	16.5	W 5 - 3
N-24	at Fla Int	6 - 4	W	55 - 23	-11.5	W 5 - 5	N-17	UAB	6 - 5	W	25 - 9	-11.0	W 6 - 3
D-1	at Troy	7 - 4	W	38 - 32	15.5	W 6 - 5	N-24	SMU	7 - 5	W	55 - 52	-7.5	L 6 - 4
Total Points 361 405							Total Points 353 375						
Avg Pts Per Game 33 37							Avg Pts Per Game 29 31						
Record SU 7 - 4							Record SU 7 - 5						
Record ATS 6 - 5							Record ATS 6 - 4						
Streaks Won 2 in a row - 3							Streaks Won 3 in a row + 3						
Spread: as of: 1/4							Spread: as of: 1/4						

PAPAJOHNS.COM
December 22, 2007

CINCINNATI							SOUTHERN MISS.						
2006 Record 8 - 5 (7 - 3 ATS)							2006 Record 9 - 5 (5 - 7 ATS)						
Date	Opponent	Record	SU	Score	Line	Vs. Spread	Date	Opponent	Record	SU	Score	Line	Vs. Spread
A-30	SE MISSOURI ST	1 - 0	W	59 - 3	NL	#### 0 - 0	S-1	TENN-MARTIN	1 - 0	W	35 - 13	NL	#### 0 - 0
S-6	OREGON ST	2 - 0	W	34 - 3	3.5	W 1 - 0	S-8	at Tennessee	1 - 1	L	19 - 39	10.5	L 0 - 1
S-15	at Miami (O)	3 - 0	W	47 - 10	-9.0	W 2 - 0	S-15	at E Carolina	2 - 1	W	28 - 21	-1.0	W 1 - 1
S-22	MARSHALL	4 - 0	W	40 - 14	-23.5	W 3 - 0	S-27	at Boise St	2 - 2	L	16 - 38	10.5	L 1 - 2
S-29	at San Diego St	5 - 0	W	52 - 23	-14.0	W 4 - 0	O-3	RICE	2 - 3	L	29 - 31	-20.0	L 1 - 3
O-6	at Rutgers	6 - 0	W	28 - 23	3.5	W 5 - 0	O-13	SMU	3 - 3	W	28 - 7	-9.0	W 2 - 3
O-13	LOUISVILLE	6 - 1	L	24 - 28	-10.5	L 5 - 1	O-21	at Marshall	4 - 3	W	33 - 24	-3.5	W 3 - 3
O-20	at Pittsburgh	6 - 2	L	17 - 24	-9.5	L 5 - 2	O-28	UCF	4 - 4	L	17 - 34	-3.0	L 3 - 4
N-3	at S Florida	7 - 2	W	38 - 33	5.0	W 6 - 2	N-3	at UAB	5 - 4	W	37 - 7	-10.5	W 4 - 4
N-10	CONNECTICUT	8 - 2	W	27 - 3	-6.0	W 7 - 2	N-10	MEMPHIS	5 - 5	L	26 - 29	-16.5	L 4 - 5
N-17	W VIRGINIA	8 - 3	L	23 - 28	6.0	W 8 - 2	N-17	at UTEP	6 - 5	W	56 - 30	-3.0	W 5 - 5
N-24	at Syracuse	9 - 3	W	52 - 31	-20.0	W 9 - 2	N-24	ARK ST	7 - 5	W	16 - 10	-14.0	L 5 - 6
Total Points 441 223							Total Points 340 283						
Avg Pts Per Game 37 19							Avg Pts Per Game 28 24						
Record SU 9 - 3							Record SU 7 - 5						
Record ATS 9 - 2							Record ATS 5 - 6						
Streaks Won 1 in a row - 10.5							Streaks Won 2 in a row + 10.5						
Spread: as of: 1/4							Spread: as of: 1/4						

NEW MEXICO (ALBUQUERQUE)
December 22, 2007

NEW MEXICO							NEVADA						
2006 Record 6 - 7 (6 - 3 ATS)							2006 Record 8 - 5 (10 - 2 ATS)						
Date	Opponent	Record	SU	Score	Line	Vs. Spread	Date	Opponent	Record	SU	Score	Line	Vs. Spread
S-1	at UTEP	0 - 1	L	6 - 10	-3.5	L 0 - 1	S-1	at Nebraska	0 - 1	L	10 - 52	21.0	L 0 - 1
S-8	NEW MEXICO ST	1 - 1	W	44 - 34	-7.5	W 1 - 1	S-8	at Northwestern	0 - 2	L	31 - 36	10.0	W 1 - 1
S-15	at Arizona	2 - 1	W	29 - 27	10.0	W 2 - 1	S-15	NICHOLLS ST	1 - 2	W	52 - 17	NL	#### 1 - 1
S-22	SACRAMENTO ST	3 - 1	W	58 - 0	NL	#### 2 - 1	S-29	UNLV	2 - 2	W	27 - 20	-3.5	W 2 - 1
S-29	BYU	3 - 2	L	24 - 31	5.5	L 2 - 2	O-6	FRESNO ST	2 - 3	L	41 - 49	-3.5	L 2 - 2
O-13	at Wyoming	4 - 2	W	20 - 3	3.5	W 3 - 2	O-14	at Boise St	2 - 4	L	67 - 69	26.5	W 3 - 2
O-20	at San Diego St	5 - 2	W	20 - 17	-8.0	L 3 - 3	O-20	at Utah St	3 - 4	W	31 - 28	-7.0	L 3 - 3
O-25	AIR FORCE	6 - 2	W	34 - 31	-6.0	L 3 - 4	O-27	IDAHO	4 - 4	W	37 - 21	-17.0	L 3 - 4
N-3	at TCU	6 - 3	L	0 - 37	3.5	L 3 - 5	N-2	at New Mexico St	5 - 4	W	40 - 38	-6.5	L 3 - 5
N-10	COLO ST	7 - 3	W	26 - 23	-9.0	L 3 - 6	N-16	HAWAII	5 - 5	L	26 - 28	7.0	W 4 - 5
N-17	at Utah	7 - 4	L	10 - 28	14.5	L 3 - 7	N-24	at San Jose St	5 - 6	L	24 - 27	-3.5	L 4 - 6
N-24	UNLV	8 - 4	W	27 - 6	-10.5	W 4 - 7	D-1	LA TECH	6 - 6	W	49 - 10	-7.5	W 5 - 6
Total Points 298 247							Total Points 435 395						
Avg Pts Per Game 25 21							Avg Pts Per Game 36 33						
Record SU 8 - 4							Record SU 6 - 6						
Record ATS 4 - 7							Record ATS 5 - 6						
Streaks Won 1 in a row - 3							Streaks Won 1 in a row + 3						
Spread: as of: 1/4							Spread: as of: 1/4						

THE XTRA POINT
2007-2008 BOWL EDITION

LAS VEGAS
December 22, 2007

BYU							UCLA									
2006 Record 11 - 2 (9 - 2 ATS)							2006 Record 7 - 6 (8 - 4 ATS)									
Date	Opponent	Record	SU	Score	Line	Vs. Spread	Date	Opponent	Record	SU	Score	Line	Vs. Spread			
S-1	ARIZONA	1 - 0	W	20 - 3	-4.0	W 1 - 0	S-1	at Stanford	1 - 0	W	45 - 17	-17.0	W 1 - 0			
S-8	at UCLA	1 - 1	L	17 - 27	7.5	L 1 - 1	S-8	BYU	2 - 0	W	27 - 17	-7.5	W 2 - 0			
S-15	at Tulsa	1 - 2	L	47 - 55	-6.5	L 1 - 2	S-15	at Utah	2 - 1	L	6 - 44	-13.5	L 2 - 1			
S-22	AIR FORCE	2 - 2	W	31 - 6	-11.5	W 2 - 2	S-22	WASHINGTON	3 - 1	W	44 - 31	-6.5	W 3 - 1			
S-29	at New Mexico	3 - 2	W	31 - 24	-5.5	W 3 - 2	S-29	at Oregon St	4 - 1	W	40 - 14	2.0	W 4 - 1			
O-13	at UNLV	4 - 2	W	24 - 14	-11.0	L 3 - 3	O-6	NOTRE DAME	4 - 2	L	6 - 20	-20.5	L 4 - 2			
O-20	E WASHINGTON	5 - 2	W	42 - 7	NL	#### 3 - 3	O-20	CALIFORNIA	5 - 2	W	30 - 21	3.0	W 5 - 2			
N-3	COLO ST	6 - 2	W	35 - 16	-21.0	L 3 - 4	O-27	at Wash St	5 - 3	L	7 - 27	-6.0	L 5 - 3			
N-8	TCU	7 - 2	W	27 - 22	-7.0	L 3 - 5	N-3	at Arizona	5 - 4	L	27 - 34	-1.5	L 5 - 4			
N-17	at Wyoming	8 - 2	W	35 - 10	-11.0	W 4 - 5	N-10	ARIZONA ST	5 - 5	L	20 - 24	7.0	W 6 - 4			
N-24	UTAH	9 - 2	W	17 - 10	-4.5	W 5 - 5	N-24	OREGON	6 - 5	W	16 - 0	2.0	W 7 - 4			
D-1	at San Diego St	10 - 2	W	48 - 27	-15.5	W 6 - 5	D-1	at USC	6 - 6	L	7 - 24	19.5	W 8 - 4			
Total Points				374	221	Total Points				275	273					
Avg Pts Per Game				31	18	Avg Pts Per Game				23	23					
				Spread:							Spread:					
				as of: 1/4							as of: 1/4					
Record SU				10 - 2			Record SU				6 - 6			as of: 1/4		
Record ATS				6 - 5			Record ATS				8 - 4					
Streaks				Won 9 in a row			Streaks				Lost 1 in a row			+ 5.5		

HAWAII (HONOLULU)
December 23, 2007

EAST CAROLINA							BOISE ST.									
2006 Record 7 - 6 (10 - 2 ATS)							2006 Record 13 - 0 (5 - 5 ATS)									
Date	Opponent	Record	SU	Score	Line	Vs. Spread	Date	Opponent	Record	SU	Score	Line	Vs. Spread			
0 - 1	at Va Tech	0 - 1	L	7 - 17	27.5	W 1 - 0	A-30	WEBER ST	1 - 0	W	56 - 7	NL	#### 0 - 0			
S-8	N CAROLINA	1 - 1	W	34 - 31	-4.5	L 1 - 1	S-8	at Washington	1 - 1	L	10 - 24	-3.0	L 0 - 1			
S-15	SO MISS	1 - 2	L	21 - 28	1.0	L 1 - 2	S-15	WYOMING	2 - 1	W	24 - 14	-12.5	L 0 - 2			
S-22	at W Virginia	1 - 3	L	7 - 48	24.5	L 1 - 3	S-27	SO MISS	3 - 1	W	38 - 16	-10.5	W 1 - 2			
S-29	at Houston	2 - 3	W	37 - 35	10.5	W 2 - 3	O-7	NEW MEXICO ST	4 - 1	W	58 - 0	-22.5	W 2 - 2			
O-6	UCF	3 - 3	W	52 - 38	4.0	W 3 - 3	O-14	NEVADA	5 - 1	W	69 - 67	-26.5	L 2 - 3			
O-13	at UTEP	4 - 3	W	45 - 42	3.0	W 4 - 3	O-20	at La Tech	6 - 1	W	45 - 31	-16.5	L 2 - 4			
O-20	NC ST	4 - 4	L	20 - 34	-5.0	L 4 - 4	O-26	at Fresno St	7 - 1	W	34 - 21	-3.0	W 3 - 4			
O-27	UAB	5 - 4	W	41 - 6	-14.5	W 5 - 4	N-3	SAN JOSE ST	8 - 1	W	42 - 7	-25.5	W 4 - 4			
N-3	at Memphis	6 - 4	W	56 - 40	-6.0	W 6 - 4	N-10	at Utah St	9 - 1	W	52 - 0	-24.5	W 5 - 4			
N-10	at Marshall	6 - 5	L	7 - 26	-7.0	L 6 - 5	N-17	IDAHO	10 - 1	W	58 - 14	-33.5	W 6 - 4			
N-24	TULANE	7 - 5	W	35 - 12	-12.0	W 7 - 5	N-23	at Hawaii	10 - 2	L	27 - 39	3.0	L 6 - 5			
Total Points				362	357	Total Points				513	240					
Avg Pts Per Game				30	30	Avg Pts Per Game				43	20					
				Spread:							Spread:					
				as of: 1/4							as of: 1/4					
Record SU				7 - 5			Record SU				10 - 2			as of: 1/4		
Record ATS				7 - 5			Record ATS				6 - 5					
Streaks				Won 1 in a row			Streaks				Lost 1 in a row			- 10.5		

MOTOR CITY (DETROIT)
December 26, 2007

PURDUE							CENTRAL MICHIGAN									
2006 Record 8 - 6 (6 - 6 ATS)							2006 Record 10 - 4 (11 - 2 ATS)									
Date	Opponent	Record	SU	Score	Line	Vs. Spread	Date	Opponent	Record	SU	Score	Line	Vs. Spread			
S-1	at Toledo	1 - 0	W	52 - 24	-6.5	W 1 - 0	S-1	at Kansas	0 - 1	L	7 - 52	7.5	L 0 - 1			
S-8	E ILLINOIS	2 - 0	W	52 - 6	NL	#### 1 - 0	S-8	TOLEDO	1 - 1	W	52 - 31	-3.0	W 1 - 1			
S-15	CENT MICH	3 - 0	W	45 - 22	-20.5	W 2 - 0	S-15	at Purdue	1 - 2	L	22 - 45	20.5	L 1 - 2			
S-22	at Minnesota	4 - 0	W	45 - 31	-14.0	P 2 - 0	S-22	N DAKOTA ST	1 - 3	L	14 - 44	NL	#### 1 - 2			
S-29	NOTRE DAME	5 - 0	W	33 - 19	-22.0	L 2 - 1	S-29	NO ILLINOIS	2 - 3	W	35 - 10	-3.0	W 2 - 2			
O-6	OHIO ST	5 - 1	L	7 - 23	7.0	L 2 - 2	O-6	at Ball St	3 - 3	W	58 - 38	13.0	W 3 - 2			
O-13	at Michigan	5 - 2	L	21 - 48	5.5	L 2 - 3	O-13	ARMY	4 - 3	W	47 - 23	-13.5	W 4 - 2			
O-20	IOWA	6 - 2	W	31 - 6	-7.0	W 3 - 3	O-20	at Clemson	4 - 4	L	14 - 70	16.5	L 4 - 3			
O-27	NORTHWESTERN	7 - 2	W	35 - 17	-13.0	W 4 - 3	O-27	at Kent St	5 - 4	W	41 - 32	-2.5	W 5 - 3			
N-3	at Penn St	7 - 3	L	19 - 26	8.5	W 5 - 3	N-6	at W Michigan	6 - 4	W	34 - 31	-3.0	L 5 - 3			
N-10	MICH ST	7 - 4	L	31 - 48	-4.0	L 5 - 4	N-17	E MICHIGAN	6 - 5	L	45 - 48	-13.0	L 5 - 4			
N-17	at Indiana	7 - 5	L	24 - 27	-2.0	L 5 - 5	N-23	at Akron	7 - 5	W	35 - 32	2.5	W 6 - 4			
Total Points				343	273	Total Points				439	466					
Avg Pts Per Game				29	23	Avg Pts Per Game				34	36					
				Spread:							Spread:					
				as of: 1/4							as of: 1/4					
Record SU				7 - 5			Record SU				8 - 5			as of: 1/4		
Record ATS				5 - 5			Record ATS				7 - 4					
Streaks				Lost 3 in a row			Streaks				Won 2 in a row			+ 7.5		

HOLIDAY (SAN DIEGO)
December 27, 2007

TEXAS							ARIZONA ST									
2006 Record 10 - 3 (5 - 6 ATS)							2006 Record 7 - 6 (7 - 4 ATS)									
Date	Opponent	Record	SU	Score	Line	Vs. Spread	Date	Opponent	Record	SU	Score	Line	Vs. Spread			
S-1	ARK ST	1 - 0	W	21 - 13	-39.5	L 0 - 1	S-1	SAN JOSE ST	1 - 0	W	45 - 3	-15.0	W 1 - 0			
S-8	TCU	2 - 0	W	34 - 13	-9.0	W 1 - 1	S-8	COLORADO	2 - 0	W	33 - 14	-15.0	W 2 - 0			
S-15	at UCF	3 - 0	W	35 - 32	-19.0	L 1 - 2	S-15	SAN DIEGO ST	3 - 0	W	34 - 13	-28.0	L 2 - 1			
S-22	RICE	4 - 0	W	58 - 14	-37.5	W 2 - 2	S-22	OREGON ST	4 - 0	W	44 - 32	-12.0	P 2 - 1			
S-29	KANSAS ST	4 - 1	L	21 - 41	-14.5	L 2 - 3	S-29	at Stanford	5 - 0	W	41 - 3	-14.0	W 3 - 1			
O-6	OKLAHOMA	4 - 2	L	21 - 28	11.0	W 3 - 3	O-6	at Wash St	6 - 0	W	23 - 20	-9.0	L 3 - 2			
O-13	at Iowa St	5 - 2	W	56 - 3	-16.0	W 4 - 3	O-13	WASHINGTON	7 - 0	W	44 - 20	-12.0	W 4 - 2			
O-20	at Baylor	6 - 2	W	31 - 10	-25.0	L 4 - 4	O-27	CALIFORNIA	8 - 0	W	31 - 20	-3.0	W 5 - 2			
O-27	NEBRASKA	7 - 2	W	28 - 25	-20.5	L 4 - 5	N-3	at Oregon	8 - 1	L	23 - 35	7.5	L 5 - 3			
N-3	at Okla St	8 - 2	W	38 - 35	-3.0	P 4 - 5	N-10	at UCLA	9 - 1	W	24 - 20	-7.0	L 5 - 4			
N-10	TEXAS TECH	9 - 2	W	59 - 43	-6.5	W 5 - 5	N-22	USC	9 - 2	L	24 - 44	3.5	L 5 - 5			
N-23	at Texas A&M	9 - 3	L	30 - 38	-6.0	L 5 - 6	D-1	ARIZONA	10 - 2	W	20 - 17	-7.0	L 5 - 6			
Total Points				411	282	Total Points				386	241					
Avg Pts Per Game				34	24	Avg Pts Per Game				32	20					
				Spread:							Spread:					
				as of: 1/4							as of: 1/4					
Record SU				9 - 3			Record SU				10 - 2			as of: 1/4		
Record ATS				5 - 6			Record ATS				5 - 6					
Streaks				Lost 1 in a row			Streaks				Won 1 in a row			+ 2.5		

THE XTRA POINT
2007-2008 BOWL EDITION

CHAMPS SPORTS (ORLANDO)
December 28, 2007

MICHIGAN ST.							BOSTON COLLEGE						
2006 Record 4 - 8 (3 - 9 ATS)							2006 Record 10 - 3 (6 - 5 ATS)						
Date	Opponent	Record	SU	Score	Line	Vs. Spread	Date	Opponent	Record	SU	Score	Line	Vs. Spread
C	S-1 UAB	1 - 0	W	55 - 18	-21.5	W 1 - 0	S-1	WAKE FOREST	1 - 0	W	38 - 28	-6.5	W 1 - 0
H	S-8 BOWLING GREEN	2 - 0	W	28 - 17	-18.5	L 1 - 1	S-8	NC ST	2 - 0	W	37 - 17	-14.0	W 2 - 0
M	S-15 PITTSBURGH	3 - 0	W	17 - 13	-10.5	L 1 - 2	S-15	at Ga Tech	3 - 0	W	24 - 10	7.0	W 3 - 0
A	S-22 at Notre Dame	4 - 0	W	31 - 14	-11.0	W 2 - 2	S-22	ARMY	4 - 0	W	37 - 17	-27.5	L 3 - 1
M	S-29 at Wisconsin	4 - 1	L	34 - 37	7.5	W 3 - 2	S-29	MASS	5 - 0	W	24 - 14	NL	#### 3 - 1
P	O-6 NORTHWESTERN	4 - 2	L	41 - 48	-14.0	L 3 - 3	O-6	BOWLING GREEN	6 - 0	W	55 - 24	-20.0	W 4 - 1
S	O-13 INDIANA	5 - 2	W	52 - 27	-4.5	W 4 - 3	O-13	at Notre Dame	7 - 0	W	27 - 14	-14.0	L 4 - 2
S	O-20 at Ohio St	5 - 3	L	17 - 24	17.0	W 5 - 3	O-25	at Va Tech	8 - 0	W	14 - 10	3.0	W 5 - 2
O	O-27 at Iowa	5 - 4	L	27 - 34	-3.0	L 5 - 4	N-3	FLORIDA ST	8 - 1	L	17 - 27	-6.5	L 5 - 3
O	N-3 MICHIGAN	5 - 5	L	24 - 28	4.0	P 5 - 4	N-10	at Maryland	8 - 2	L	35 - 42	-6.5	L 5 - 4
R	N-10 at Purdue	6 - 5	W	48 - 31	4.0	W 6 - 4	N-17	at Clemson	9 - 2	W	20 - 17	7.5	W 6 - 4
T	N-17 PENN ST	7 - 5	W	35 - 31	2.5	W 7 - 4	N-24	MIAMI	10 - 2	W	28 - 14	-14.5	L 6 - 5
S													
		Total Points		409	322				Total Points		356	234	
		Avg Pts Per Game		58	27				Avg Pts Per Game		30	20	
		Record SU		7 - 5		as of: 1/4			Record SU		10 - 2		as of: 1/4
		Record ATS		7 - 4					Record ATS		6 - 5		
		Streaks	Won	2	in a row	+ 4			Streaks	Won	2	in a row	- 4

EMERALD (SAN FRANCISCO)
December 28, 2007

OREGON ST.							MARYLAND						
2006 Record 10 - 4 (7 - 5 ATS)							2006 Record 9 - 4 (4 - 7 ATS)						
Date	Opponent	Record	SU	Score	Line	Vs. Spread	Date	Opponent	Record	SU	Score	Line	Vs. Spread
A-30	UTAH	1 - 0	W	24 - 7	-6.5	W 1 - 0	S-1	VILLANOVA	1 - 0	W	31 - 14	NL	#### 0 - 0
S-8	at Cincinnati	1 - 1	L	3 - 34	-3.5	L 1 - 1	S-8	at Fla Int	2 - 0	W	26 - 10	-23.5	L 0 - 1
E	S-15 IDAHO ST	2 - 1	W	61 - 10	NL	#### 1 - 1	S-13	W VIRGINIA	2 - 1	L	14 - 31	16.5	L 0 - 2
M	S-22 at Arizona St	2 - 2	L	32 - 44	12.0	P 1 - 1	S-22	at Wake Forest	2 - 2	L	24 - 31	3.5	L 0 - 3
E	S-29 UCLA	2 - 3	L	14 - 40	-2.0	L 1 - 2	S-29	at Rutgers	3 - 2	W	34 - 24	16.5	W 1 - 3
R	O-6 ARIZONA	3 - 3	W	31 - 16	-4.0	W 2 - 2	O-6	GA TECH	4 - 2	W	28 - 26	3.0	W 2 - 3
A	O-13 at California	4 - 3	W	31 - 28	14.0	W 3 - 2	O-20	VIRGINIA	4 - 3	L	17 - 18	-4.0	L 2 - 4
R	O-27 STANFORD	5 - 3	W	23 - 6	-13.5	W 4 - 2	O-27	CLEMSON	4 - 4	L	17 - 30	3.5	L 2 - 5
D	N-3 at USC	5 - 4	L	3 - 24	15.0	L 4 - 3	N-3	at N Carolina	4 - 5	L	13 - 16	2.5	L 2 - 6
L	N-10 WASHINGTON	6 - 4	W	29 - 23	-4.5	W 5 - 3	N-10	BOSTON COLL	5 - 5	W	42 - 35	6.5	W 3 - 6
B	N-17 at Wash St	7 - 4	W	52 - 17	2.5	W 6 - 3	N-17	at Florida St	5 - 6	L	16 - 24	7.5	L 3 - 7
O	D-1 at Oregon	8 - 4	W	38 - 31	0.0	W 7 - 3	N-24	at NC State	6 - 6	W	37 - 0	2.5	W 4 - 7
W													
L													
		Total Points		341	280				Total Points		299	259	
		Avg Pts Per Game		28	23				Avg Pts Per Game		25	22	
		Record SU		8 - 4		as of: 1/4			Record SU		6 - 6		as of: 1/4
		Record ATS		7 - 3					Record ATS		4 - 7		
		Streaks	Won	3	in a row	- 5			Streaks	Won	1	in a row	+ 5

TEXAS (HOUSTON)
December 28, 2007

HOUSTON							TCU						
2006 Record 10 - 3 (8 - 4 ATS)							2006 Record 11 - 2 (8 - 3 ATS)						
Date	Opponent	Record	SU	Score	Line	Vs. Spread	Date	Opponent	Record	SU	Score	Line	Vs. Spread
T	S-1 at Oregon	0 - 1	L	27 - 48	6.5	L 0 - 1	S-1	BAYLOR	1 - 0	W	27 - 0	-21.0	W 1 - 0
E	S-15 at Tulane	1 - 1	W	34 - 10	-14.5	W 1 - 1	S-8	at Texas	1 - 1	L	13 - 34	9.0	L 1 - 1
T	S-22 COLO ST	2 - 1	W	38 - 27	-7.0	W 2 - 1	S-13	at Air Force	1 - 2	L	17 - 20	-8.0	L 1 - 2
X	S-29 E CAROLINA	2 - 2	L	35 - 37	-10.5	L 2 - 2	S-22	SMU	2 - 2	W	21 - 7	-23.5	L 1 - 3
A	O-6 at Alabama	2 - 3	L	24 - 30	11.0	W 3 - 2	S-29	COLO ST	3 - 2	W	24 - 12	-10.0	W 2 - 3
S	O-13 RICE	3 - 3	W	56 - 48	-21.0	L 3 - 3	O-6	at Wyoming	3 - 3	L	21 - 24	3.0	P 2 - 3
B	O-20 at UAB	4 - 3	W	49 - 10	-13.0	W 4 - 3	O-13	at Stanford	4 - 3	W	38 - 36	-6.0	L 2 - 4
O	O-27 at UTEP	5 - 3	W	34 - 31	-6.0	L 4 - 4	O-18	UTAH	4 - 4	L	20 - 27	-3.5	L 2 - 5
B	N-4 SMU	6 - 3	W	38 - 28	-19.0	L 4 - 5	N-3	NEW MEXICO	5 - 4	W	37 - 0	-3.5	W 3 - 5
W	N-10 at Tulsa	6 - 4	L	7 - 56	1.0	L 4 - 6	N-8	at BYU	5 - 5	L	22 - 27	7.0	W 4 - 5
L	N-17 MARSHALL	7 - 4	W	35 - 28	-12.0	L 4 - 7	N-17	UNLV	6 - 5	W	34 - 10	-17.5	W 5 - 5
	N-24 TEXAS SOUTHERN	8 - 4	W	59 - 6	NL	#### 4 - 7	N-24	at San Diego St	7 - 5	W	45 - 33	-11.0	W 6 - 5
		Total Points		436	359				Total Points		319	230	
		Avg Pts Per Game		36	30				Avg Pts Per Game		27	19	
		Record SU		8 - 4		as of: 1/4			Record SU		7 - 5		as of: 1/4
		Record ATS		4 - 7					Record ATS		6 - 5		
		Streaks	Won	2	in a row	+ 4.5			Streaks	Won	2	in a row	- 4.5

MEINEKE (CHARLOTTE)
December 29, 2007

WAKE FOREST							CONNECTICUT						
2006 Record 11 - 3 (8 - 4 ATS)							2006 Record 4 - 8 (5 - 6 ATS)						
Date	Opponent	Record	SU	Score	Line	Vs. Spread	Date	Opponent	Record	SU	Score	Line	Vs. Spread
M	S-1 at Boston Coll	0 - 1	L	28 - 38	6.5	L 0 - 1	S-1	at Duke	1 - 0	W	45 - 14	-4.5	W 1 - 0
E	S-8 NEBRASKA	0 - 2	L	17 - 20	8.0	W 1 - 1	S-8	MAINE	2 - 0	W	38 - 0	NL	#### 1 - 0
I	S-15 ARMY	1 - 2	W	21 - 10	-20.0	L 1 - 2	S-15	TEMPLE	3 - 0	W	22 - 17	-29.5	L 1 - 1
N	S-22 MARYLAND	2 - 2	W	31 - 24	-3.5	W 2 - 2	S-22	at Pittsburgh	4 - 0	W	34 - 14	9.5	W 2 - 1
E	O-6 at Duke	3 - 2	W	41 - 36	-7.0	L 2 - 3	S-29	AKRON	5 - 0	W	44 - 10	-13.5	W 3 - 1
K	O-11 FLORIDA ST	4 - 2	W	24 - 21	6.0	W 3 - 3	O-13	at Virginia	5 - 1	L	16 - 17	3.0	W 4 - 1
E	O-20 at Navy	5 - 2	W	44 - 24	-3.0	W 4 - 3	O-19	LOUISVILLE	6 - 1	W	21 - 17	3.0	W 5 - 1
K	O-27 N CAROLINA	6 - 2	W	37 - 10	-5.5	W 5 - 3	O-27	S FLORIDA	7 - 1	W	22 - 15	4.0	W 6 - 1
B	N-3 at Virginia	6 - 3	L	16 - 17	-1.0	L 5 - 4	N-3	RUTGERS	8 - 1	W	38 - 19	-1.5	W 7 - 1
O	N-10 at Clemson	6 - 4	L	10 - 44	9.0	L 5 - 5	N-10	at Cincinnati	8 - 2	L	3 - 27	6.0	L 7 - 2
W	N-17 NC STATE	7 - 4	W	38 - 18	-6.0	W 6 - 5	N-17	SYRACUSE	9 - 2	W	30 - 7	-19.0	W 8 - 2
L	N-24 at Vanderbilt	8 - 4	W	31 - 17	-1.0	W 7 - 5	N-24	at W Virginia	9 - 3	L	21 - 66	17.5	L 8 - 3
		Total Points		338	279				Total Points		334	223	
		Avg Pts Per Game		28	23				Avg Pts Per Game		28	19	
		Record SU		8 - 4		as of: 1/4			Record SU		9 - 3		as of: 1/4
		Record ATS		7 - 5					Record ATS		8 - 3		
		Streaks	Won	2	in a row	- 2.5			Streaks	Lost	1	in a row	+ 2.5

THE XTRA POINT
2007-2008 BOWL EDITION

LIBERTY (MEMPHIS)
December 29, 2007

CENTRAL FLORIDA							MISSISSIPPI ST.						
2006 Record 4 - 8 (4 - 7 ATS)							2006 Record 3 - 9 (5 - 5 ATS)						
Date	Opponent	Record	SU	Score	Line	Vs. Spread	Date	Opponent	Record	SU	Score	Line	Vs. Spread
S-1	at NC St	1 - 0	W	25 - 23	8.0	W 1 - 0	A-30	LSU	0 - 1	L	0 - 45	17.5	L 0 - 1
L	S-15 TEXAS	1 - 1	L	32 - 35	19.0	W 2 - 0	S-8	at Tulane	1 - 1	W	38 - 17	-5.5	W 1 - 1
I	S-22 MEMPHIS	2 - 1	W	56 - 20	-7.0	W 3 - 0	S-15	at Auburn	2 - 1	W	19 - 14	13.0	W 2 - 1
B	S-29 LA-LAFAYETTE	3 - 1	W	37 - 19	-21.5	L 3 - 1	S-22	GARDNER-WEBB	3 - 1	W	31 - 15	NL	#### 2 - 1
E	O-6 at E Carolina	3 - 2	L	38 - 52	-4.0	L 3 - 2	S-29	at S Carolina	3 - 2	L	21 - 38	13.5	L 2 - 2
R	O-13 at S Florida	3 - 3	L	12 - 64	12.0	L 3 - 3	O-6	UAB	4 - 2	W	30 - 13	-19.0	L 2 - 3
Y	O-20 TULSA	4 - 3	W	44 - 23	-3.0	W 4 - 3	O-13	TENNESSEE	4 - 3	L	21 - 33	7.0	L 2 - 4
T	O-28 at So Miss	5 - 3	W	34 - 17	3.0	W 5 - 3	O-20	at W Virginia	4 - 4	L	13 - 38	24.0	L 2 - 5
N	N-3 MARSHALL	6 - 3	W	47 - 13	-14.0	W 6 - 3	O-27	at Kentucky	5 - 4	W	31 - 14	14.0	W 3 - 5
B	N-10 at UAB	7 - 3	W	45 - 31	-20.0	L 6 - 4	N-10	ALABAMA	6 - 4	W	17 - 12	4.5	W 4 - 5
O	N-17 at SMU	8 - 3	W	49 - 20	-12.5	W 7 - 4	N-17	at Arkansas	6 - 5	L	31 - 45	11.0	L 4 - 6
W	N-24 UTEP	9 - 3	W	36 - 20	-19.5	L 7 - 5	N-23	MISSISSIPPI	7 - 5	W	17 - 14	-6.5	L 4 - 7
L	D-1 Tulsa	10 - 3	W	44 - 25	-7.5	W 8 - 5							
				Total Points	455	337					Total Points	269	298
				Avg Pts Per Game	35	26					Avg Pts Per Game	22	25
				Spread:						Spread:			
				Record SU	10 - 3	as of: 1/4				Record SU	7 - 5	as of: 1/4	
				Record ATS	8 - 5					Record ATS	4 - 7		
				Streaks	Won 7 in a row	-3				Streaks	Won 1 in a row	+3	

ALAMO (SAN ANTONIO)
December 29, 2007

TEXAS A&M							PENN ST.						
2006 Record 9 - 4 (8 - 2 ATS)							2006 Record 9 - 4 (4 - 6 ATS)						
Date	Opponent	Record	SU	Score	Line	Vs. Spread	Date	Opponent	Record	SU	Score	Line	Vs. Spread
S-1	MONTANA ST	1 - 0	W	38 - 7	NL	#### 0 - 0	S-1	FLA INT	1 - 0	W	59 - 0	-37.5	W 1 - 0
S-8	FRESNO ST	2 - 0	W	47 - 45	-17.5	L 0 - 1	S-8	NOTRE DAME	2 - 0	W	31 - 10	-17.5	W 2 - 0
A	S-15 LA-MONROE	3 - 0	W	54 - 14	-23.5	W 1 - 1	S-15	BUFFALO	3 - 0	W	45 - 24	-34.0	L 2 - 1
L	S-20 at Miami	3 - 1	L	17 - 34	2.5	L 1 - 2	S-22	at Michigan	3 - 1	L	9 - 14	-3.0	L 2 - 2
A	S-29 BAYLOR	4 - 1	W	34 - 10	-16.5	W 2 - 2	S-29	at Illinois	3 - 2	L	20 - 27	-3.0	L 2 - 3
M	O-6 OKLA ST	5 - 1	W	24 - 23	-6.5	L 2 - 3	O-6	IOWA	4 - 2	W	27 - 7	-9.5	W 3 - 3
O	O-13 at Texas Tech	5 - 2	L	7 - 35	8.5	L 2 - 4	O-13	WISCONSIN	5 - 2	W	38 - 7	-7.0	W 4 - 3
M	O-20 at Nebraska	6 - 2	W	36 - 14	2.0	W 3 - 4	O-20	at Indiana	6 - 2	W	36 - 31	-7.5	L 4 - 4
B	O-27 KANSAS	6 - 3	L	11 - 19	3.0	L 3 - 5	O-27	OHIO ST	6 - 3	L	17 - 37	3.5	L 4 - 5
O	N-3 at Oklahoma	6 - 4	L	14 - 42	21.0	L 3 - 6	N-3	PURDUE	7 - 3	W	26 - 19	-8.5	L 4 - 6
W	N-10 at Missouri	6 - 5	L	26 - 40	19.0	W 4 - 6	N-10	at Temple	8 - 3	W	31 - 0	-25.0	W 5 - 6
L	N-23 TEXAS	7 - 5	W	38 - 30	6.0	W 5 - 6	N-17	at Mich St	8 - 4	L	31 - 35	-2.5	L 5 - 7
				Total Points	308	306					Total Points	370	211
				Avg Pts Per Game	26	26					Avg Pts Per Game	31	18
				Spread:						Spread:			
				Record SU	7 - 5	as of: 1/4				Record SU	8 - 4	as of: 1/4	
				Record ATS	5 - 6					Record ATS	5 - 7		
				Streaks	Won 1 in a row	+5.5				Streaks	Lost 1 in a row	-5.5	

INDEPENDENCE (SHREVEPORT, LA.)
December 30, 2007

ALABAMA							COLORADO						
2006 Record 6 - 7 (6 - 6 ATS)							2006 Record 2 - 10 (3 - 8 ATS)						
Date	Opponent	Record	SU	Score	Line	Vs. Spread	Date	Opponent	Record	SU	Score	Line	Vs. Spread
I	S-1 W CAROLINA	1 - 0	W	52 - 6	NL	#### 0 - 0	S-1	COLO ST	1 - 0	W	31 - 28	-2.5	W 1 - 0
N	S-8 at Vanderbilt	2 - 0	W	24 - 10	-3.5	W 1 - 0	S-8	at Arizona St	1 - 1	L	14 - 33	15.0	L 1 - 1
D	S-15 ARKANSAS	3 - 0	W	41 - 38	-3.0	P 1 - 0	S-15	FLORIDA ST	1 - 2	L	6 - 16	4.0	L 1 - 2
E	S-22 GEORGIA	3 - 1	L	23 - 26	-3.5	L 1 - 1	S-22	MIAMI (O)	2 - 2	W	42 - 0	-13.5	W 2 - 2
P	S-29 at Florida St	3 - 2	L	14 - 21	2.5	L 1 - 2	S-29	OKLAHOMA	3 - 2	W	27 - 24	22.5	W 3 - 2
N	O-6 HOUSTON	4 - 2	W	30 - 24	-11.0	L 1 - 3	O-6	at Baylor	4 - 2	W	42 - 23	-8.5	W 4 - 2
D	O-13 at Mississippi	5 - 2	W	27 - 24	-6.5	L 1 - 4	O-13	at Kansas St	4 - 3	L	20 - 47	5.5	L 4 - 3
N	O-20 TENNESSEE	6 - 2	W	41 - 17	0.0	W 2 - 4	O-20	KANSAS	4 - 4	L	14 - 19	3.5	L 4 - 4
E	N-3 LSU	6 - 3	L	34 - 41	7.5	W 3 - 4	O-27	at Texas Tech	5 - 4	W	31 - 26	13.5	W 5 - 4
N	N-10 at Miss St	6 - 4	L	12 - 17	-4.5	L 3 - 5	N-3	MISSOURI	5 - 5	L	10 - 55	3.5	L 5 - 5
C	N-17 LA-MONROE	6 - 5	L	14 - 21	-24.5	L 3 - 6	N-10	at Iowa St	5 - 6	L	28 - 31	-4.5	L 5 - 6
E	N-24 at Auburn	6 - 6	L	10 - 17	6.0	L 3 - 7	N-23	NEBRASKA	6 - 6	W	65 - 51	-3.5	W 6 - 6
				Total Points	322	262					Total Points	330	353
				Avg Pts Per Game	27	22					Avg Pts Per Game	28	29
				Spread:						Spread:			
				Record SU	6 - 6	as of: 1/4				Record SU	6 - 6	as of: 1/4	
				Record ATS	3 - 7					Record ATS	6 - 6		
				Streaks	Lost 4 in a row	-3.5				Streaks	Won 1 in a row	+3.5	

ARMED FORCES (FT. WORTH)
December 31, 2007

AIR FORCE							CALIFORNIA						
2006 Record 4 - 8 (4 - 8 ATS)							2006 Record 10 - 3 (5 - 6 ATS)						
Date	Opponent	Record	SU	Score	Line	Vs. Spread	Date	Opponent	Record	SU	Score	Line	Vs. Spread
A	S-1 S CAROLINA ST	1 - 0	W	34 - 3	NL	#### 0 - 0	S-1	TENNESSEE	1 - 0	W	45 - 31	-6.5	W 1 - 0
R	S-8 at Utah	2 - 0	W	20 - 12	7.5	W 1 - 0	S-8	at Colo St	2 - 0	W	34 - 28	-13.5	L 1 - 1
M	S-13 TCU	3 - 0	W	20 - 17	8.0	W 2 - 0	S-15	LA TECH	3 - 0	W	42 - 12	-33.5	L 1 - 2
R	S-22 at BYU	3 - 1	L	6 - 31	11.5	L 2 - 1	S-22	ARIZONA	4 - 0	W	45 - 27	-14.0	W 2 - 2
D	S-29 at Navy	3 - 2	L	20 - 31	3.0	L 2 - 2	S-29	at Oregon	5 - 0	W	31 - 24	5.5	W 3 - 2
E	O-6 UNLV	4 - 2	W	31 - 14	-5.5	W 3 - 2	O-13	OREGON ST	5 - 1	L	28 - 31	-14.0	L 3 - 3
F	O-13 at Colorado St	5 - 2	W	45 - 21	4.0	W 4 - 2	O-20	at UCLA	5 - 2	L	21 - 30	-3.0	L 3 - 4
O	O-20 WYOMING	6 - 2	W	20 - 12	-3.0	W 5 - 2	O-27	at Arizona St	5 - 3	L	20 - 31	3.0	L 3 - 5
R	O-25 at New Mexico	6 - 3	L	31 - 34	6.0	W 6 - 2	N-3	WASH ST	6 - 3	W	20 - 17	-14.5	L 3 - 6
O	N-3 ARMY	7 - 3	W	30 - 10	-16.5	W 7 - 2	N-10	USC	6 - 4	L	17 - 24	4.0	L 3 - 7
C	N-10 at Notre Dame	8 - 3	W	41 - 24	-3.5	W 8 - 2	N-17	at Washington	6 - 5	L	23 - 37	-7.0	L 3 - 8
S	N-17 SAN DIEGO ST	9 - 3	W	55 - 23	-11.0	W 9 - 2	D-1	at Stanford	6 - 6	L	13 - 20	-13.5	L 3 - 9
				Total Points	353	232					Total Points	339	312
				Avg Pts Per Game	29	19					Avg Pts Per Game	28	26
				Spread:						Spread:			
				Record SU	9 - 3	as of: 1/4				Record SU	6 - 6	as of: 1/4	
				Record ATS	9 - 2					Record ATS	3 - 9		
				Streaks	Won 3 in a row	+4				Streaks	Lost 3 in a row	-4	

THE XTRA POINT
2007-2008 BOWL EDITION

SUN (EL PASO)
December 31, 2007

OREGON							SOUTH FLORIDA														
2006 Record 7 - 6 (6 - 5 ATS)							2006 Record 9 - 4 (7 - 4 ATS)														
Date	Opponent	Record	SU	Score	Line	Vs. Spread	Date	Opponent	Record	SU	Score	Line	Vs. Spread								
S-1	HOUSTON	1 - 0	W	48 - 27	-16.0	W 1 - 0	S-1	ELON	1 - 0	W	28 - 13	NL	#### 0 - 0								
S-8	at Michigan	2 - 0	W	39 - 7	7.0	W 2 - 0	S-8	at Auburn	2 - 0	W	26 - 23	7.0	W 1 - 0								
S-15	FRESNO ST	3 - 0	W	52 - 21	-16.5	W 3 - 0	S-22	N CAROLINA	3 - 0	W	37 - 10	-13.0	W 2 - 0								
S-22	at Stanford	4 - 0	W	55 - 31	-17.0	W 4 - 0	S-28	W VIRGINIA	4 - 0	W	21 - 13	7.0	W 3 - 0								
S-29	CALIFORNIA	4 - 1	L	24 - 31	-5.5	L 4 - 1	O-6	at Fla Atlantic	5 - 0	W	35 - 23	-16.0	L 3 - 1								
O-13	WASH ST	5 - 1	W	53 - 7	-18.0	W 5 - 1	O-13	UCF	6 - 0	W	64 - 12	-12.0	W 4 - 1								
O-20	at Washington	6 - 1	W	55 - 34	-11.0	W 6 - 1	O-18	at Rutgers	6 - 1	L	27 - 30	-2.0	L 4 - 2								
O-27	USC	7 - 1	W	24 - 17	-3.0	W 7 - 1	O-27	at Connecticut	6 - 2	L	15 - 22	-4.0	L 4 - 3								
N-3	ARIZONA ST	8 - 1	W	35 - 23	-7.5	W 8 - 1	N-3	CINCINNATI	6 - 3	L	33 - 38	-5.0	L 4 - 4								
N-15	at Arizona	8 - 2	L	24 - 34	-12.0	L 8 - 2	N-10	at Syracuse	7 - 3	W	41 - 10	-16.0	W 5 - 4								
N-24	at UCLA	8 - 3	L	0 - 16	-2.0	L 8 - 3	N-17	LOUISVILLE	8 - 3	W	55 - 17	-7.0	W 6 - 4								
D-1	OREGON ST	8 - 4	L	31 - 38	0.0	L 8 - 4	N-24	at Pittsburgh	9 - 3	W	48 - 37	-10.0	W 7 - 4								
Total Points				440	286	Total Points				430	248										
Avg Pts Per Game				37	24	Avg Pts Per Game				36	21										
				Spread:							Spread:										
Record SU				8 - 4	as of: 1/4			Record SU				9 - 3	as of: 1/4								
Record ATS				8 - 4				Record ATS				7 - 4									
Streaks				Lost	3	in a row			Streaks				Won	3	in a row			- 6			

HUMANITARIAN (BOISE)
December 31, 2007

GEORGIA TECH							FRESNO ST.														
2006 Record 9 - 5 (6 - 5 ATS)							2006 Record 4 - 8 (1 - 11 ATS)														
Date	Opponent	Record	SU	Score	Line	Vs. Spread	Date	Opponent	Record	SU	Score	Line	Vs. Spread								
S-1	at Notre Dame	1 - 0	W	33 - 3	1.5	W 1 - 0	S-1	SACRAMENTO ST	1 - 0	W	24 - 3	NL	#### 0 - 0								
S-8	SAMFORD	2 - 0	W	69 - 14	NL	#### 1 - 0	S-8	at Texas A&M	1 - 1	L	45 - 47	17.5	W 1 - 0								
S-15	BOSTON COLL	2 - 1	L	10 - 24	-7.0	L 1 - 1	S-15	at Oregon	1 - 2	L	21 - 52	16.5	L 1 - 1								
S-22	at Virginia	2 - 2	L	23 - 28	-4.0	L 1 - 2	S-29	LA TECH	2 - 2	W	17 - 6	-12.0	L 1 - 2								
S-29	CLEMSON	3 - 2	W	13 - 3	3.0	W 2 - 2	O-6	at Nevada	3 - 2	W	49 - 41	3.5	W 2 - 2								
O-6	at Maryland	3 - 3	L	26 - 28	-3.0	L 2 - 3	O-13	at Idaho	4 - 2	W	27 - 24	-10.0	L 2 - 3								
O-13	at Miami	4 - 3	W	17 - 14	2.5	W 3 - 3	O-20	SAN JOSE ST	5 - 2	W	30 - 0	-12.5	W 3 - 3								
O-20	ARMY	5 - 3	W	34 - 10	-24.0	P 3 - 3	O-26	BOISE ST	5 - 3	L	21 - 34	3.0	L 3 - 4								
N-1	VA TECH	5 - 4	L	3 - 27	-2.5	L 3 - 4	N-3	UTAH ST	6 - 3	W	38 - 27	-20.5	L 3 - 5								
N-10	at Duke	6 - 4	W	41 - 24	-14.0	W 4 - 4	N-10	at Hawaii	6 - 4	L	30 - 37	17.0	W 4 - 5								
N-17	N CAROLINA	7 - 4	W	27 - 25	-10.0	L 4 - 5	N-24	KANSAS ST	7 - 4	W	45 - 29	1.0	W 5 - 5								
N-24	GEORGIA	7 - 5	L	17 - 31	3.5	L 4 - 6	N-30	at New Mexico St	8 - 4	W	30 - 23	-12.5	L 5 - 6								
Total Points				313	231	Total Points				377	323										
Avg Pts Per Game				26	19	Avg Pts Per Game				31	27										
				Spread:							Spread:										
Record SU				7 - 5	as of: 1/4			Record SU				8 - 4	as of: 1/4								
Record ATS				4 - 6				Record ATS				5 - 6									
Streaks				Lost	1	in a row			Streaks				Won	2	in a row			+ 6			

MUSIC CITY (NASHVILLE)
December 31, 2007

KENTUCKY							FLORIDA ST.														
2006 Record 8 - 5 (6 - 5 ATS)							2006 Record 7 - 6 (5 - 7 ATS)														
Date	Opponent	Record	SU	Score	Line	Vs. Spread	Date	Opponent	Record	SU	Score	Line	Vs. Spread								
S-1	E KENTUCKY	1 - 0	W	50 - 10	NL	#### 0 - 0	S-3	at Clemson	0 - 1	L	18 - 24	-3.5	L 0 - 1								
S-8	KENT ST	2 - 0	W	56 - 20	-12.5	W 1 - 0	S-8	UAB	1 - 1	W	34 - 24	-34.5	L 0 - 2								
S-15	LOUISVILLE	3 - 0	W	40 - 34	7.0	W 2 - 0	S-15	at Colorado	2 - 1	W	16 - 6	-4.0	W 1 - 2								
S-22	at Arkansas	4 - 0	W	42 - 29	6.5	W 3 - 0	S-29	ALABAMA	3 - 1	W	21 - 14	-2.5	W 2 - 2								
S-29	FLA ATLANTIC	5 - 0	W	45 - 17	-22.0	W 4 - 0	O-6	NC ST	4 - 1	W	27 - 10	-18.0	L 2 - 3								
O-4	at S Carolina	5 - 1	L	23 - 38	3.5	L 4 - 1	O-11	at Wake Forest	4 - 2	L	21 - 24	-6.0	L 2 - 4								
O-13	LSU	6 - 1	W	43 - 37	10.0	W 5 - 1	O-20	MIAMI	4 - 3	L	29 - 37	-5.5	L 2 - 5								
O-20	FLORIDA	6 - 2	L	37 - 45	7.0	L 5 - 2	O-27	DUKE	5 - 3	W	25 - 6	-17.5	W 3 - 5								
O-27	MISS ST	6 - 3	L	14 - 31	-14.0	L 5 - 3	N-3	at Boston Coll	6 - 3	W	27 - 17	6.5	W 4 - 5								
N-10	at Vanderbilt	7 - 3	W	27 - 20	-3.5	W 6 - 3	N-10	at Va Tech	6 - 4	L	21 - 40	6.5	L 4 - 6								
N-17	at Georgia	7 - 4	L	13 - 24	8.0	L 6 - 4	N-17	MARYLAND	7 - 4	W	24 - 16	-7.5	W 5 - 6								
N-24	TENNESSEE	7 - 5	L	50 - 52	-3.0	L 6 - 5	N-24	at Florida	7 - 5	L	12 - 45	14.0	L 5 - 7								
Total Points				440	357	Total Points				275	263										
Avg Pts Per Game				37	30	Avg Pts Per Game				23	22										
				Spread:							Spread:										
Record SU				7 - 5	as of: 1/4			Record SU				7 - 5	as of: 1/4								
Record ATS				6 - 5				Record ATS				5 - 7									
Streaks				Lost	2	in a row			Streaks				Lost	1	in a row			+ 9			

CHICK-FIL-A (ATLANTA)
December 31, 2007

AUBURN							CLEMSON														
2006 Record 11 - 2 (5 - 6 ATS)							2006 Record 8 - 5 (6 - 6 ATS)														
Date	Opponent	Record	SU	Score	Line	Vs. Spread	Date	Opponent	Record	SU	Score	Line	Vs. Spread								
S-1	KANSAS ST	1 - 0	W	23 - 13	-13.5	L 0 - 1	S-3	FLORIDA ST	1 - 0	W	24 - 18	3.5	W 1 - 0								
S-8	S FLORIDA	1 - 1	L	23 - 26	-7.0	L 0 - 2	S-8	LA-MONROE	2 - 0	W	49 - 26	-26.0	L 1 - 1								
S-15	MISS ST	1 - 2	L	14 - 19	-13.0	L 0 - 3	S-15	FURMAN	3 - 0	W	38 - 10	NL	#### 1 - 1								
S-22	NEW MEXICO ST	2 - 2	W	55 - 20	-16.5	W 1 - 3	S-22	at NC St	4 - 0	W	42 - 20	-7.0	W 2 - 1								
S-29	at Florida	4 - 2	W	20 - 17	18.0	W 2 - 3	S-29	at Ga Tech	4 - 1	L	3 - 13	-3.0	L 2 - 2								
O-6	VANDERBILT	4 - 2	W	35 - 7	-7.5	W 3 - 3	O-6	VA TECH	4 - 2	L	23 - 41	-5.5	L 2 - 3								
O-13	at Arkansas	5 - 2	W	9 - 7	3.0	W 4 - 3	O-20	C MICHIGAN	5 - 2	W	70 - 14	-16.5	W 3 - 3								
O-20	at LSU	5 - 3	L	24 - 30	10.5	W 5 - 3	O-27	at Maryland	6 - 2	W	30 - 17	-3.5	W 4 - 3								
O-27	MISSISSIPPI	6 - 3	W	17 - 3	-18.0	L 5 - 4	N-3	at Duke	7 - 2	W	47 - 10	-16.0	W 5 - 3								
N-3	TENN TECH	7 - 3	W	35 - 3	NL	#### 5 - 4	N-10	WAKE FOREST	8 - 2	W	44 - 10	-9.0	W 6 - 3								
N-10	at Georgia	7 - 4	L	20 - 45	2.0	L 5 - 5	N-17	BOSTON COLL	8 - 3	L	17 - 20	-7.5	L 6 - 4								
N-24	ALABAMA	8 - 4	W	17 - 10	-6.0	W 6 - 5	N-24	at S Carolina	9 - 3	W	23 - 21	-3.0	L 6 - 5								
Total Points				292	200	Total Points				410	220										
Avg Pts Per Game				24	17	Avg Pts Per Game				34	18										
				Spread:							Spread:										
Record SU				8 - 4	as of: 1/4			Record SU				9 - 3	as of: 1/4								
Record ATS				6 - 5				Record ATS				6 - 5									
Streaks				Won	1	in a row			Streaks				Won	1	in a row			- 2.5			

THE XTRA POINT
2007-2008 BOWL EDITION

INSIGHT (TEMPE, AZ)
December 31, 2007

INDIANA							OKLAHOMA ST.								
2006 Record 5 - 7 (5 - 6 ATS)							2006 Record 7 - 6 (6 - 5 ATS)								
Date	Opponent	Record	SU	Score	Line	Vs. Spread	Date	Opponent	Record	SU	Score	Line	Vs. Spread		
I	S-1 INDIANA ST	1 - 0	W	55 - 7	NL	#### 0 - 0	S-1	at Georgia	0 - 1	L	14 - 35	6.0	L 0 - 1		
N	S-8 at W Michigan	2 - 0	W	37 - 27	1.0	W 1 - 0	S-8	FLA ATLANTIC	1 - 1	W	42 - 6	-23.5	W 1 - 1		
S	S-15 AKRON	3 - 0	W	41 - 24	-13.0	W 2 - 0	S-14	at Troy	1 - 2	L	23 - 41	-10.0	L 1 - 2		
I	S-22 ILLINOIS	3 - 1	L	14 - 27	2.5	L 2 - 1	S-22	TEXAS TECH	2 - 2	W	49 - 45	6.0	W 2 - 2		
H	S-29 at Iowa	4 - 1	W	38 - 20	11.0	W 3 - 1	S-29	SAM HOUSTON ST	3 - 2	W	39 - 3	NL	#### 2 - 2		
G	O-6 MINNESOTA	5 - 1	W	40 - 20	-13.5	W 4 - 1	O-6	at Texas A&M	3 - 3	L	23 - 24	6.5	W 3 - 2		
T	O-13 at Mich St	5 - 2	L	27 - 52	4.5	L 4 - 2	O-13	at Nebraska	4 - 3	W	45 - 14	4.0	W 4 - 2		
O	O-20 PENN ST	5 - 3	L	31 - 36	7.5	W 5 - 2	O-20	KANSAS ST	5 - 3	W	41 - 39	-3.0	L 4 - 3		
B	O-27 at Wisconsin	5 - 4	L	3 - 33	8.5	L 5 - 3	N-3	TEXAS	5 - 4	L	35 - 38	3.0	P 4 - 3		
O	N-3 BALL ST	6 - 4	W	38 - 20	-6.5	W 6 - 3	N-10	KANSAS	5 - 5	L	28 - 43	6.0	L 4 - 4		
W	N-10 at Northwestern	6 - 5	L	28 - 31	-2.5	L 6 - 4	N-17	at Baylor	6 - 5	W	45 - 14	-14.5	W 5 - 4		
L	N-17 PURDUE	7 - 5	W	27 - 24	2.0	W 7 - 4	N-24	at Oklahoma	6 - 6	L	17 - 49	11.5	L 5 - 5		
Total Points				379	321	Total Points				401	351				
Avg Pts Per Game				32	27	Avg Pts Per Game				33	29				
				Spread:							Spread:				
Record SU				7 - 5	as of: 1/4			Record SU				6 - 6	as of: 1/4		
Record ATS				7 - 4				Record ATS				5 - 5			
Streaks				Won 1 in a row	+ 4.5			Streaks				Lost 1 in a row	- 4.5		

OUTBACK (TAMPA)
January 1, 2008

WISCONSIN							TENNESSEE								
2006 Record 12 - 1 (8 - 2 ATS)							2006 Record 9 - 4 (7 - 5 ATS)								
Date	Opponent	Record	SU	Score	Line	Vs. Spread	Date	Opponent	Record	SU	Score	Line	Vs. Spread		
O	S-1 WASH ST	1 - 0	W	42 - 21	-14.5	W 1 - 0	S-1	at California	0 - 1	L	31 - 45	6.5	L 0 - 1		
T	S-8 at UNLV	2 - 0	W	20 - 13	-25.5	L 1 - 1	S-8	SO MISS	1 - 1	W	39 - 19	-10.5	W 1 - 1		
U	S-15 CITADEL	3 - 0	W	45 - 31	NL	#### 1 - 1	S-15	at Florida	1 - 2	L	20 - 59	8.0	L 1 - 2		
A	S-22 IOWA	4 - 0	W	17 - 13	-7.0	L 1 - 2	S-22	ARK ST	2 - 2	W	48 - 27	-19.5	W 2 - 2		
B	S-29 MICH ST	5 - 0	W	37 - 34	-7.5	L 1 - 3	O-6	GEORGIA	3 - 2	W	35 - 14	-1.5	W 3 - 2		
K	O-6 at Illinois	5 - 1	L	26 - 31	2.5	L 1 - 4	O-13	at Miss St	4 - 2	W	33 - 21	-7.0	W 4 - 2		
C	O-13 at Penn St	5 - 2	L	7 - 38	7.0	L 1 - 5	O-20	at Alabama	4 - 3	L	17 - 41	0.0	L 4 - 3		
K	O-20 NO ILLINOIS	6 - 2	W	44 - 3	-23.5	W 2 - 5	O-27	S CAROLINA	5 - 3	W	27 - 24	-3.0	P 4 - 3		
B	O-27 INDIANA	7 - 2	W	33 - 3	-8.5	W 3 - 5	N-3	LA-LAFAYETTE	6 - 3	W	59 - 7	-27.5	W 5 - 3		
O	N-3 at Ohio St	7 - 3	L	17 - 38	16.0	L 3 - 6	N-10	ARKANSAS	7 - 3	W	34 - 13	0.0	W 6 - 3		
W	N-10 MICHIGAN	8 - 3	W	37 - 21	2.5	W 4 - 6	N-17	VANDERBILT	7 - 4	L	24 - 25	-11.5	L 6 - 4		
L	N-17 at Minnesota	9 - 3	W	41 - 34	-14.0	L 4 - 7	N-24	at Kentucky	8 - 4	W	52 - 50	3.0	W 7 - 4		
Total Points				366	280	Total Points				402	321				
Avg Pts Per Game				31	23	Avg Pts Per Game				31	25				
				Spread:							Spread:				
Record SU				9 - 3	as of: 1/4			Record SU				8 - 5	as of: 1/4		
Record ATS				4 - 7				Record ATS				8 - 4			
Streaks				Won 2 in a row	- 3.5			Streaks				Lost 1 in a row	+ 3.5		

COTTON (DALLAS)
January 1, 2008

MISSOURI							ARKANSAS								
2006 Record 8 - 5 (6 - 5 ATS)							2006 Record 10 - 4 (4 - 8 ATS)								
Date	Opponent	Record	SU	Score	Line	Vs. Spread	Date	Opponent	Record	SU	Score	Line	Vs. Spread		
C	S-1 ILLINOIS	1 - 0	W	40 - 34	-4.5	W 1 - 0	S-1	TROY	1 - 0	W	46 - 26	-24.0	L 0 - 1		
O	S-8 at Mississippi	2 - 0	W	35 - 28	-5.5	W 2 - 0	S-15	at Alabama	1 - 1	L	38 - 41	3.0	P 0 - 1		
T	S-15 W MICHIGAN	3 - 0	W	52 - 24	-20.0	W 3 - 0	S-22	KENTUCKY	1 - 2	L	29 - 42	-6.5	L 0 - 2		
T	S-22 ILLINOIS ST	4 - 0	W	38 - 17	NL	#### 3 - 0	S-29	NORTH TEXAS	2 - 2	W	66 - 7	-36.0	W 1 - 2		
O	O-6 NEBRASKA	5 - 0	W	41 - 6	-7.0	W 4 - 0	O-6	CHATTANOOGA	3 - 2	W	34 - 15	NL	#### 1 - 2		
N	O-13 at Oklahoma	5 - 1	L	31 - 41	10.0	P 4 - 0	O-13	AUBURN	3 - 3	L	7 - 9	-3.0	L 1 - 3		
O	O-20 TEXAS TECH	6 - 1	W	41 - 10	-3.5	W 5 - 0	O-20	at Mississippi	4 - 3	W	44 - 8	-5.0	W 2 - 3		
B	O-27 IOWA ST	7 - 1	W	42 - 28	-28.5	L 5 - 1	O-27	FLA INT	5 - 3	W	58 - 10	-40.5	W 3 - 3		
O	N-3 at Colorado	8 - 1	W	55 - 10	-3.5	W 6 - 1	N-3	S CAROLINA	6 - 3	W	48 - 36	-5.5	W 4 - 3		
W	N-10 TEXAS A&M	9 - 1	W	40 - 26	-19.0	L 6 - 2	N-10	at Tennessee	6 - 4	L	13 - 34	0.0	L 4 - 4		
L	N-17 at Kansas St	10 - 1	W	49 - 32	-7.0	W 7 - 2	N-17	MISS ST	7 - 4	W	45 - 31	-11.0	W 5 - 4		
	N-24 at KANSAS	11 - 1	W	36 - 28	2.0	W 8 - 2	N-24	at LSU	8 - 4	W	50 - 48	13.0	W 6 - 4		
	D-1 Oklahoma	11 - 2	L	17 - 34	3.0	L 8 - 3									
Total Points				517	318	Total Points				478	307				
Avg Pts Per Game				40	24	Avg Pts Per Game				40	26				
				Spread:							Spread:				
Record SU				11 - 2	as of: 1/4			Record SU				8 - 4	as of: 1/4		
Record ATS				8 - 3				Record ATS				6 - 4			
Streaks				Lost 1 in a row	- 1.5			Streaks				Won 2 in a row	- 1.5		

CAPITAL ONE (ORLANDO)
January 1, 2008

MICHIGAN							FLORIDA								
2006 Record 11 - 2 (7 - 4 ATS)							2006 Record 13 - 1 (4 - 8 ATS)								
Date	Opponent	Record	SU	Score	Line	Vs. Spread	Date	Opponent	Record	SU	Score	Line	Vs. Spread		
C	S-1 APPALACH ST	0 - 1	L	32 - 34	NL	#### 0 - 0	S-1	W KENTUCKY	1 - 0	W	49 - 3	NL	#### 0 - 0		
A	S-8 OREGON	0 - 2	L	7 - 39	-7.0	L 0 - 1	S-8	TROY	2 - 0	W	59 - 31	-26.5	W 1 - 0		
P	S-15 NOTRE DAME	1 - 2	W	38 - 0	-7.5	W 1 - 1	S-15	TENNESSEE	3 - 0	W	59 - 20	-8.0	W 2 - 0		
I	S-22 PENN ST	2 - 2	W	14 - 9	3.0	W 2 - 1	S-22	at Mississippi	4 - 0	W	30 - 24	-22.5	L 2 - 1		
T	S-29 at Northwestern	3 - 2	W	28 - 16	-16.5	L 2 - 2	S-29	AUBURN	4 - 1	L	17 - 20	-18.0	L 2 - 2		
A	O-6 E MICHIGAN	4 - 2	W	33 - 22	-31.0	L 2 - 3	O-6	at LSU	4 - 2	L	24 - 28	8.5	W 3 - 2		
L	O-13 PURDUE	5 - 2	W	48 - 21	-5.5	W 3 - 3	O-20	at Kentucky	5 - 2	W	45 - 37	-7.0	W 4 - 2		
O	O-20 at Illinois	6 - 2	W	27 - 17	-2.5	W 4 - 3	O-27	GEORGIA	5 - 3	L	30 - 42	-7.5	L 4 - 3		
O	O-27 MINNESOTA	7 - 2	W	34 - 10	-23.0	W 5 - 3	N-3	VANDERBILT	6 - 3	W	49 - 22	-14.5	W 5 - 3		
N	N-3 at Mich St	8 - 2	W	28 - 24	-4.0	P 5 - 3	N-10	at S Carolina	7 - 3	W	51 - 31	-7.5	W 6 - 3		
E	N-10 at Wisconsin	8 - 3	L	21 - 37	-2.5	L 5 - 4	N-17	FLA ATLANTIC	8 - 3	W	59 - 20	-34.5	W 7 - 3		
B	N-17 OHIO ST	8 - 4	L	3 - 14	5.0	L 5 - 5	N-24	FLORIDA ST	9 - 3	W	45 - 12	-14.0	W 8 - 3		
Total Points				313	243	Total Points				517	290				
Avg Pts Per Game				26	20	Avg Pts Per Game				43	24				
				Spread:							Spread:				
Record SU				8 - 4	as of: 1/4			Record SU				9 - 3	as of: 1/4		
Record ATS				5 - 5				Record ATS				8 - 3			
Streaks				Lost 2 in a row	+ 10.5			Streaks				Won 4 in a row	- 10.5		

SU = Straight Up
ATS = Against the Spread

THE XTRA POINT
2007-2008 BOWL EDITION

GATOR (JACKSONVILLE)
January 1, 2008

VIRGINIA							TEXAS TECH									
2006 Record 5 - 7 (5 - 7 ATS)							2006 Record 8 - 5 (5 - 6 ATS)									
Date	Opponent	Record	SU	Score	Line	Vs. Spread	Date	Opponent	Record	SU	Score	Line	Vs. Spread			
S-1	at Wyoming	0 - 1	L	3 - 23	-3.5	L 0 - 1	S-3	at SMU	1 - 0	W	49 - 9	-8.5	W 1 - 0			
S-8	DUKE	1 - 1	W	24 - 13	-17.5	L 0 - 2	S-8	UTEP	2 - 0	W	45 - 31	-24.0	L 1 - 1			
G	S-15 at N Carolina	2 - 1	W	22 - 20	3.0	W 1 - 2	S-15	at Rice	3 - 0	W	59 - 24	-28.0	W 2 - 1			
A	S-22 GA TECH	3 - 1	W	28 - 23	4.0	W 2 - 2	S-22	at Okla St	3 - 1	L	45 - 49	-6.0	L 2 - 2			
T	S-29 PITTSBURGH	4 - 1	W	44 - 14	-7.0	W 3 - 2	S-29	NORTHWEST ST	4 - 1	W	75 - 7	NL	#### 2 - 2			
O	O-6 at Middle Tenn	5 - 1	W	23 - 21	-10.5	L 3 - 3	O-6	IOWA ST	5 - 1	W	42 - 17	-24.0	W 3 - 2			
R	O-13 CONNECTICUT	6 - 1	W	17 - 16	-3.0	L 3 - 4	O-13	TEXAS A&M	6 - 1	W	35 - 7	-8.5	W 4 - 2			
O	O-20 at Maryland	7 - 1	W	18 - 17	4.0	W 4 - 4	O-20	at Missouri	6 - 2	L	10 - 41	3.5	L 4 - 3			
B	O-27 at NC State	7 - 2	L	24 - 29	-3.5	L 4 - 5	O-27	COLORADO	6 - 3	L	26 - 31	-13.5	L 4 - 4			
O	N-3 WAKE FOREST	8 - 2	W	17 - 16	1.0	W 5 - 5	N-3	at Baylor	7 - 3	W	38 - 7	-20.5	W 5 - 4			
W	N-10 at Miami	9 - 2	W	48 - 0	3.5	W 6 - 5	N-10	at Texas	7 - 4	L	43 - 59	6.5	L 5 - 5			
L	N-24 VA TECH	9 - 3	L	21 - 33	3.5	L 6 - 6	N-17	OKLAHOMA	8 - 4	W	34 - 27	8.0	W 6 - 5			
Total Points				289	225	Total Points				501	309					
Avg Pts Per Game				32	19	Avg Pts Per Game				63	26					
				Spread:							Spread:					
Record SU				9 - 3			Record SU				8 - 4			as of: 1/4		
Record ATS				6 - 6			Record ATS				6 - 5					
Streaks				Lost 1 in a row			Streaks				Won 1 in a row			- 6		

ROSE (PASADENA)
January 1, 2008

ILLINOIS							SOUTHERN CAL									
2006 Record 2 - 10 (5 - 6 ATS)							2006 Record 11 - 2 (6 - 6 ATS)									
Date	Opponent	Record	SU	Score	Line	Vs. Spread	Date	Opponent	Record	SU	Score	Line	Vs. Spread			
S-1	at Missouri	0 - 1	L	34 - 40	4.5	L 0 - 1	S-1	IDAHO	1 - 0	W	38 - 10	-46.0	L 0 - 1			
R	S-8 W ILLINOIS	1 - 1	W	14 - 0	NL	#### 0 - 1	S-15	at Nebraska	2 - 0	W	49 - 31	-9.5	W 1 - 1			
O	S-15 at Syracuse	2 - 1	W	41 - 20	-12.5	W 1 - 1	S-22	WASH ST	3 - 0	W	47 - 14	-25.0	W 2 - 1			
S	S-22 at Indiana	3 - 1	W	27 - 14	-2.5	W 2 - 1	S-29	at Washington	4 - 0	W	27 - 24	-20.5	L 2 - 2			
E	S-29 PENN ST	4 - 1	W	27 - 20	3.0	W 3 - 1	O-6	STANFORD	4 - 1	L	23 - 24	-39.5	L 2 - 3			
O	O-6 WISCONSIN	5 - 1	W	31 - 26	-2.5	W 4 - 1	O-13	ARIZONA	5 - 1	W	20 - 13	-22.0	L 2 - 4			
B	O-13 at Iowa	5 - 2	L	6 - 10	-3.5	L 4 - 2	O-20	at Notre Dame	6 - 1	W	38 - 0	-17.5	W 3 - 4			
O	O-20 MICHIGAN	5 - 3	L	17 - 27	2.5	L 4 - 3	O-27	at Oregon	6 - 2	L	17 - 24	3.0	L 3 - 5			
W	O-27 BALL ST	6 - 3	W	28 - 17	-14.0	L 4 - 4	N-3	OREGON ST	7 - 2	W	24 - 3	-15.0	W 4 - 5			
L	N-3 at Minnesota	7 - 3	W	44 - 17	-11.5	W 5 - 4	N-10	at California	8 - 2	W	24 - 17	-4.0	W 5 - 5			
N	N-10 at Ohio St	8 - 3	W	28 - 21	15.0	W 6 - 4	N-22	at Arizona St	9 - 2	W	44 - 24	-3.5	W 6 - 5			
N	N-17 NORTHWESTERN	9 - 3	W	41 - 22	-13.5	W 7 - 4	D-1	UCLA	10 - 2	W	24 - 7	-19.5	L 6 - 6			
Total Points				338	234	Total Points				375	191					
Avg Pts Per Game				28	20	Avg Pts Per Game				31	16					
				Spread:							Spread:					
Record SU				9 - 3			Record SU				10 - 2			as of: 1/4		
Record ATS				7 - 4			Record ATS				6 - 6					
Streaks				Won 4 in a row			Streaks				Won 4 in a row			- 13.5		

SUGAR (NEW ORLEANS)
January 1, 2008

HAWAII							GEORGIA									
2006 Record 11 - 3 (8 - 3 ATS)							2006 Record 9 - 4 (4 - 6 ATS)									
Date	Opponent	Record	SU	Score	Line	Vs. Spread	Date	Opponent	Record	SU	Score	Line	Vs. Spread			
S	S-8 at La Tech	1 - 0	W	45 - 44	-27.5	L 0 - 1	S-1	OKLA ST	1 - 0	W	35 - 14	-6.0	W 1 - 0			
U	S-15 at UNLV	2 - 0	W	49 - 14	-17.0	W 1 - 1	S-8	S CAROLINA	1 - 1	L	12 - 16	-3.5	L 1 - 1			
G	S-22 CHARLESTON SO	3 - 0	W	66 - 10	NL	#### 1 - 1	S-15	W CAROLINA	2 - 1	W	45 - 16	NL	#### 1 - 1			
A	S-29 at Idaho	4 - 0	W	48 - 20	-25.5	W 2 - 1	S-22	at Alabama	3 - 1	W	26 - 23	3.5	W 2 - 1			
R	O-6 UTAH ST	5 - 0	W	52 - 37	-39.0	L 2 - 2	S-29	MISSISSIPPI	4 - 1	W	45 - 17	-15.0	W 3 - 1			
O	O-12 at San Jose St	6 - 0	W	42 - 35	-18.5	L 2 - 3	O-6	at Tennessee	4 - 2	L	14 - 35	1.5	L 3 - 2			
A	O-27 NEW MEXICO ST	7 - 0	W	50 - 13	-27.5	W 3 - 3	O-13	at Vanderbilt	5 - 2	W	20 - 17	-7.0	L 3 - 3			
B	N-10 FRESNO ST	8 - 0	W	37 - 30	-17.0	L 3 - 4	O-27	at Florida	6 - 2	W	42 - 30	7.5	W 4 - 3			
O	N-16 at Nevada	9 - 0	W	28 - 26	-7.0	L 3 - 5	N-3	TROY	7 - 2	W	44 - 34	-16.0	L 4 - 4			
W	N-23 BOISE ST	10 - 0	W	39 - 27	-3.0	W 4 - 5	N-10	AUBURN	8 - 2	W	45 - 20	-2.0	W 5 - 4			
L	D-2 WASHINGTON	11 - 0	W	35 - 28	-14.0	L 4 - 6	N-17	KENTUCKY	9 - 2	W	24 - 13	-8.0	W 6 - 4			
Total Points				491	284	Total Points				383	252					
Avg Pts Per Game				45	26	Avg Pts Per Game				32	21					
				Spread:							Spread:					
Record SU				11 - 0			Record SU				10 - 2			as of: 1/4		
Record ATS				4 - 6			Record ATS				7 - 4					
Streaks				Won 11 in a row			Streaks				Won 8 in a row			- 7.5		

FIESTA (GLENDALE, AZ)
January 2, 2008

OKLAHOMA							WEST VIRGINIA									
2006 Record 11 - 3 (9 - 3 ATS)							2006 Record 11 - 2 (5 - 5 ATS)									
Date	Opponent	Record	SU	Score	Line	Vs. Spread	Date	Opponent	Record	SU	Score	Line	Vs. Spread			
F	S-1 NORTH TEXAS	1 - 0	W	79 - 10	-39.0	W 1 - 0	S-1	W MICHIGAN	1 - 0	W	62 - 24	-23.5	W 1 - 0			
I	S-8 MIAMI	2 - 0	W	51 - 13	-10.5	W 2 - 0	S-8	at Marshall	2 - 0	W	48 - 23	-24.0	W 2 - 0			
E	S-15 UTAH ST	3 - 0	W	54 - 3	-46.0	W 3 - 0	S-13	at Maryland	3 - 0	W	31 - 14	-16.5	W 3 - 0			
S	S-21 at Tulsa	4 - 0	W	62 - 21	-23.0	W 4 - 0	S-22	E CAROLINA	4 - 0	W	48 - 7	-24.5	W 4 - 0			
T	S-29 at Colorado	4 - 1	L	24 - 27	-22.5	L 4 - 1	S-28	at S Florida	4 - 1	L	13 - 21	-7.0	L 4 - 1			
A	O-6 at Texas	5 - 1	W	28 - 21	-11.0	L 4 - 2	O-6	at Syracuse	5 - 1	W	55 - 14	-26.5	W 5 - 1			
O	O-13 MISSOURI	6 - 1	W	41 - 31	-10.0	P 4 - 2	O-20	MISS ST	6 - 1	W	38 - 13	-24.0	W 6 - 1			
B	O-20 at Iowa St	7 - 1	W	17 - 7	-29.0	L 4 - 3	O-27	at Rutgers	7 - 1	W	31 - 3	-6.0	W 7 - 1			
O	N-3 TEXAS A&M	8 - 1	W	42 - 14	-21.0	W 5 - 3	N-8	LOUISVILLE	8 - 1	W	38 - 31	-16.0	L 7 - 2			
W	N-10 BAYLOR	9 - 1	W	52 - 21	-38.0	L 5 - 4	N-17	at Cincinnati	9 - 1	W	28 - 23	-6.0	L 7 - 3			
L	N-17 at Texas Tech	9 - 2	L	27 - 34	-8.0	L 5 - 5	N-24	CONNECTICUT	10 - 1	W	66 - 21	-17.5	W 8 - 3			
N	N-24 OKLA ST	10 - 2	W	49 - 17	-11.5	W 6 - 5	D-1	PITTSBURGH	10 - 2	L	9 - 13	-29.0	L 8 - 4			
D	D-1 Missouri	11 - 2	W	38 - 17	-3.0	W 7 - 5										
Total Points				564	236	Total Points				467	207					
Avg Pts Per Game				43	18	Avg Pts Per Game				39	17					
				Spread:							Spread:					
Record SU				11 - 2			Record SU				10 - 2			as of: 1/4		
Record ATS				7 - 5			Record ATS				8 - 4					
Streaks				Won 2 in a row			Streaks				Lost 1 in a row			+ 7		

THE XTRA POINT
2007-2008 BOWL EDITION

ORANGE (MIAMI, FLA.)
January 3, 2008

VIRGINIA TECH							KANSAS							
2006 Record 10 - 3 (7 - 4 ATS)							2006 Record 6 - 6 (5 - 5 ATS)							
Date	Opponent	Record	SU	Score	Line	Vs. Spread	Date	Opponent	Record	SU	Score	Line	Vs. Spread	
S-1	E CAROLINA	1 - 0	W	17 - 7	-27.5	L 0 - 1	S-1	CENT MICH	1 - 0	W	52 - 7	-7.5	W 1 - 0	
R	S-8 at LSU	1 - 1	L	7 - 48	11.0	L 0 - 2	S-8	SE LOUISIANA	2 - 0	W	62 - 0	NL	#### 1 - 0	
A	S-15 OHIO	2 - 1	W	28 - 7	-20.5	W 1 - 2	S-15	TOLEDO	3 - 0	W	45 - 13	-21.5	W 2 - 0	
N	S-22 WM & MARY	3 - 1	W	44 - 3	NL	#### 1 - 2	S-22	FLA INT	4 - 0	W	55 - 3	-32.5	W 3 - 0	
E	S-29 N CAROLINA	4 - 1	W	17 - 10	-18.0	L 1 - 3	O-6	at Kansas St	5 - 0	W	30 - 24	3.0	W 4 - 0	
G	O-6 at Clemson	5 - 1	W	41 - 23	5.5	W 2 - 3	O-13	BAYLOR	6 - 0	W	58 - 10	-25.0	W 5 - 0	
B	O-13 at Duke	6 - 1	W	43 - 14	-13.5	W 3 - 3	O-20	at Colorado	7 - 0	W	19 - 14	-3.5	W 6 - 0	
O	O-25 BOSTON COLL	6 - 2	L	10 - 14	-3.0	L 3 - 4	O-27	at Texas A&M	8 - 0	W	19 - 11	-3.0	W 7 - 0	
W	N-1 at Ga Tech	7 - 2	W	27 - 3	2.5	W 4 - 4	N-3	NEBRASKA	9 - 0	W	76 - 39	-20.0	W 8 - 0	
L	N-10 FLORIDA ST	8 - 2	W	40 - 21	-6.5	W 5 - 4	N-10	at Okla St	10 - 0	W	43 - 28	-6.0	W 9 - 0	
	N-17 MIAMI	9 - 2	W	44 - 14	-17.0	W 6 - 4	N-17	IOWA ST	11 - 0	W	45 - 7	-26.0	W 10 - 0	
	N-24 at Virginia	10 - 2	W	33 - 21	-3.5	W 7 - 4	N-24	MISSOURI	11 - 1	L	28 - 36	-2.0	L 10 - 1	
				Total Points	351 185						Total Points	532 192		
				Avg Pts Per Game	35 15						Avg Pts Per Game	48 16		
				Spread:						Spread:				
				Record SU	10 - 2		as of: 1/4			Record SU	11 - 1		as of: 1/4	
				Record ATS	7 - 4					Record ATS	10 - 1			
				Streaks	Won 4 in a row		- 3			Streaks	Lost 1 in a row		+ 3	

INTERNATIONAL (TORONTO, CAN.)
January 5, 2008

RUTGERS							BALL STATE							
2006 Record 11 - 2 (7 - 3 ATS)							2006 Record 5 - 7 (8 - 3 ATS)							
Date	Opponent	Record	SU	Score	Line	Vs. Spread	Date	Opponent	Record	SU	Score	Line	Vs. Spread	
I	A-30 BUFFALO	1 - 0	W	38 - 3	-32.0	W 1 - 0	A-30	MIAMI (O)	0 - 1	L	13 - 14	-6.0	L 0 - 1	
T	S-7 NAVY	2 - 0	W	41 - 24	-15.5	W 2 - 0	S-8	at E Michigan	1 - 1	W	38 - 16	-4.5	W 1 - 1	
N	S-15 NORFOLK ST	3 - 0	W	59 - 0	NL	#### 2 - 0	S-15	at Navy	2 - 1	W	34 - 31	7.0	W 2 - 1	
E	S-29 MARYLAND	3 - 1	L	24 - 34	-16.5	L 2 - 1	S-22	at Nebraska	2 - 2	L	40 - 41	22.5	W 3 - 1	
R	O-6 CINCINNATI	3 - 2	L	23 - 28	-3.5	L 2 - 2	S-29	BUFFALO	3 - 2	W	49 - 14	-16.0	W 4 - 1	
A	O-13 at Syracuse	4 - 2	W	38 - 14	-17.5	W 3 - 2	O-6	C MICHIGAN	3 - 3	L	38 - 58	-13.0	L 4 - 2	
N	O-18 S FLORIDA	5 - 2	W	30 - 27	2.0	W 4 - 2	O-13	W KENTUCKY	4 - 3	W	35 - 12	NL	#### 4 - 2	
I	O-27 W VIRGINIA	5 - 3	L	3 - 31	6.0	L 4 - 3	O-20	at W Michigan	5 - 3	W	27 - 23	-1.0	W 5 - 2	
T	N-3 at Connecticut	5 - 4	L	19 - 38	1.5	L 4 - 4	O-27	at Illinois	5 - 4	L	17 - 28	14.0	W 6 - 2	
N	N-9 at Army	6 - 4	W	41 - 6	-19.5	W 5 - 4	N-3	at Indiana	5 - 5	L	20 - 38	6.5	L 6 - 3	
O	N-17 PITTSBURGH	7 - 4	W	20 - 16	-12.0	L 5 - 5	N-13	TOLEDO	6 - 5	W	41 - 20	-5.5	W 7 - 3	
L	N-29 at Louisville	7 - 5	L	38 - 41	2.5	L 5 - 6	N-24	at No Illinois	7 - 5	W	27 - 21	-8.5	L 7 - 4	
				Total Points	374 262						Total Points	379 316		
				Avg Pts Per Game	31 22						Avg Pts Per Game	32 26		
				Spread:						Spread:				
				Record SU	7 - 5		as of: 1/4			Record SU	7 - 5		as of: 1/4	
				Record ATS	5 - 6					Record ATS	7 - 4			
				Streaks	Lost 1 in a row		- 10			Streaks	Won 2 in a row		+ 10	

GMAC (MOBILE, ALA.)
January 6, 2008

TULSA							BOWLING GREEN							
2006 Record 8 - 5 (6 - 5 ATS)							2006 Record 4 - 8 (4 - 8 ATS)							
Date	Opponent	Record	SU	Score	Line	Vs. Spread	Date	Opponent	Record	SU	Score	Line	Vs. Spread	
G	A-30 at La-Monroe	1 - 0	W	35 - 17	-3.0	W 1 - 0	S-1	at Minnesota	1 - 0	W	32 - 31	14.5	W 1 - 0	
M	S-15 BYU	2 - 0	W	55 - 47	6.5	W 2 - 0	S-8	at Mich St	1 - 1	L	17 - 28	18.5	W 2 - 0	
A	S-21 OKLAHOMA	2 - 1	L	21 - 62	23.0	L 2 - 1	S-22	TEMPLE	2 - 1	W	48 - 35	-21.0	L 2 - 1	
C	S-29 UAB	3 - 1	W	38 - 30	-20.5	L 2 - 2	S-29	W KENTUCKY	3 - 1	W	41 - 21	NL	#### 2 - 1	
B	O-6 at UTEP	3 - 2	L	47 - 48	-3.0	L 2 - 3	O-6	at Boston Coll	3 - 2	L	24 - 55	20.0	L 2 - 2	
O	O-13 MARSHALL	4 - 2	W	38 - 31	-14.0	L 2 - 4	O-13	at Miami (O)	3 - 3	L	14 - 47	1.5	L 2 - 3	
W	O-20 at UCF	4 - 3	L	23 - 44	3.0	L 2 - 5	O-20	at Kent St	4 - 3	W	31 - 20	5.0	W 3 - 3	
L	O-27 SMU	5 - 3	W	29 - 23	-13.5	L 2 - 6	O-27	OHIO	4 - 4	L	27 - 38	-7.0	L 3 - 4	
	N-3 at Tulane	6 - 3	W	49 - 25	-6.5	W 3 - 6	N-2	AKRON	5 - 4	W	44 - 20	-6.5	W 4 - 4	
	N-10 HOUSTON	7 - 3	W	56 - 7	-1.0	W 4 - 6	N-9	at E Michigan	6 - 4	W	39 - 32	-3.5	W 5 - 4	
	N-17 at Army	8 - 3	W	49 - 39	-15.5	L 4 - 7	N-17	at Buffalo	7 - 4	W	31 - 17	-1.0	W 6 - 4	
	N-24 at Rice	9 - 3	W	48 - 43	-12.0	L 4 - 8	N-23	TOLEDO	8 - 4	W	37 - 10	-6.5	W 7 - 4	
	D-1 UCF	9 - 4	L	25 - 44	7.5	L 4 - 9								
				Total Points	513 460						Total Points	385 354		
				Avg Pts Per Game	39 35						Avg Pts Per Game	32 30		
				Spread:						Spread:				
				Record SU	9 - 4		as of: 1/4			Record SU	8 - 4		as of: 1/4	
				Record ATS	4 - 9					Record ATS	7 - 4			
				Streaks	Lost 1 in a row		- 5			Streaks	Won 4 in a row		+ 5	

BCS CHAMPIONSHIP (NEW ORLEANS)
January 8, 2008

OHIO ST.							LSU							
2006 Record 12 - 1 (9 - 3 ATS)							2006 Record 11 - 2 (7 - 5 ATS)							
Date	Opponent	Record	SU	Score	Line	Vs. Spread	Date	Opponent	Record	SU	Score	Line	Vs. Spread	
B	S-1 YOUNGSTOWN ST	1 - 0	W	38 - 6	NL	#### 0 - 0	A-30	at Miss St	1 - 0	W	45 - 0	-17.5	W 1 - 0	
C	S-8 AKRON	2 - 0	W	20 - 2	-28.5	L 0 - 1	S-8	VA TECH	2 - 0	W	48 - 7	-11.0	W 2 - 0	
S	S-15 at Washington	3 - 0	W	33 - 14	-4.0	W 1 - 1	S-15	MIDDLE TENN	3 - 0	W	44 - 0	-40.0	W 3 - 0	
H	S-22 NORTHWESTERN	4 - 0	W	58 - 7	-22.5	W 2 - 1	S-22	S CAROLINA	4 - 0	W	28 - 16	-18.0	L 3 - 1	
C	S-29 at Minnesota	5 - 0	W	30 - 7	-23.5	L 2 - 2	S-29	at Tulane	5 - 0	W	34 - 9	-40.0	L 3 - 2	
O	O-6 at Purdue	6 - 0	W	23 - 7	-7.0	W 3 - 2	O-6	FLORIDA	6 - 0	W	28 - 24	-8.5	L 3 - 3	
A	O-13 KENT ST	7 - 0	W	48 - 3	-30.5	W 4 - 2	O-13	at Kentucky	6 - 1	L	37 - 43	-10.0	L 3 - 4	
M	O-20 MICH ST	8 - 0	W	24 - 17	-17.0	L 4 - 3	O-20	AUBURN	7 - 1	W	30 - 24	-10.5	L 3 - 5	
P	O-27 at Penn St	9 - 0	W	37 - 17	-3.5	W 5 - 3	N-3	at Alabama	8 - 1	W	41 - 34	-7.5	L 3 - 6	
I	N-3 WISCONSIN	10 - 0	W	38 - 17	-16.0	W 6 - 3	N-10	LA TECH	9 - 1	W	58 - 10	-36.0	W 4 - 6	
O	N-10 ILLINOIS	10 - 1	L	21 - 28	-15.0	L 6 - 4	N-17	at Mississippi	10 - 1	W	41 - 24	-19.0	L 4 - 7	
N	N-17 at Michigan	11 - 1	W	14 - 3	-3.0	W 7 - 4	N-23	ARKANSAS	10 - 2	L	48 - 50	-13.0	L 4 - 8	
							D-1	Tennessee	11 - 2	W	21 - 14	-7.5	L 4 - 9	
				Total Points	384 128						Total Points	503 255		
				Avg Pts Per Game	32 11						Avg Pts Per Game	39 20		
				Spread:						Spread:				
				Record SU	11 - 1		as of: 1/4			Record SU	11 - 2		as of: 1/4	
				Record ATS	7 - 4					Record ATS	4 - 9			
				Streaks	Won 1 in a row		+ 4			Streaks	Won 1 in a row		- 4	